

SHALLCO SERIES 26 TEST SWITCH



Part Number: 26204B 18327-2

General:

Meets requirements for 1 - 25 ampere switching of resistive loads to .75 power factor at voltages to 600 V AC and 250 V DC resistive loads

Electrical Ratings:

- 25A/120 VAC
- 15A/600 VAC
- 20A/600 VAC (RES)
- 3A/125 VDC
- 1A/250 VDC



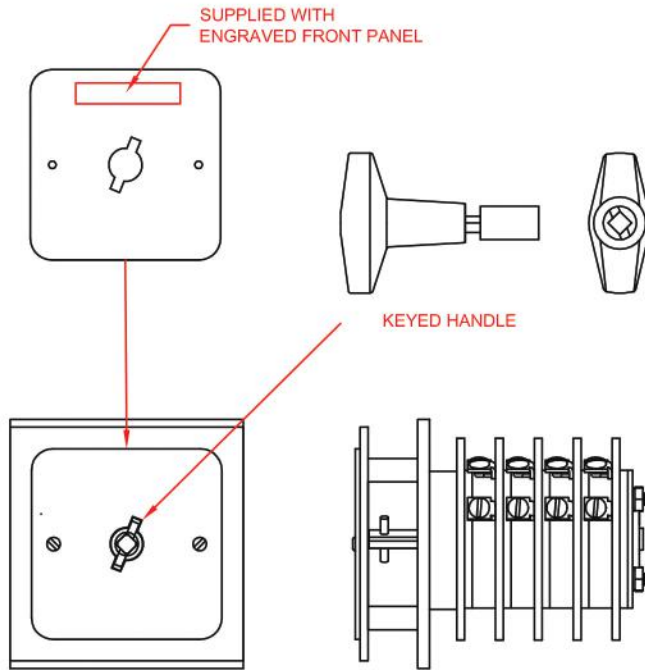
- * Current carrying capacity: 25 amperes
- * Dielectric Withstanding Voltage: 2200 Vrms
- * Contact Resistance: Initial, 10 milliohms max.
- * Insulation Resistance: 100 Megohms min., initial

Mechanical:

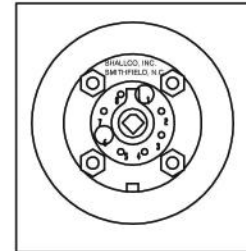
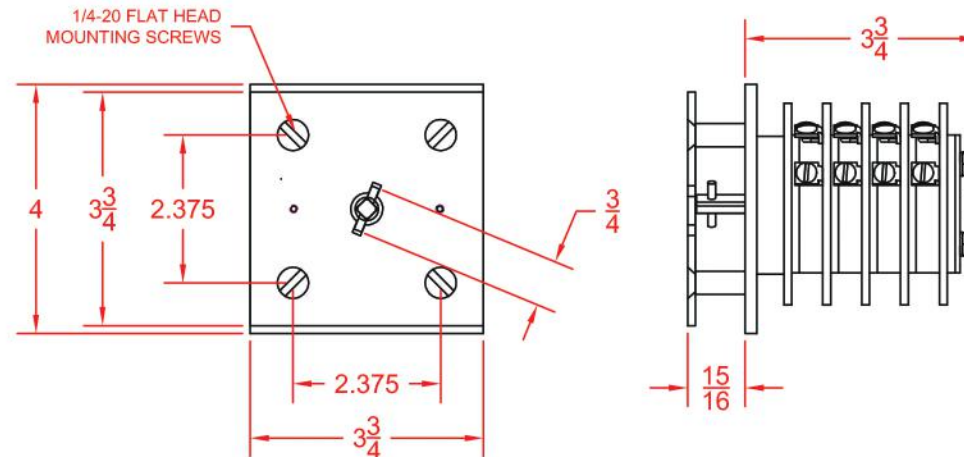
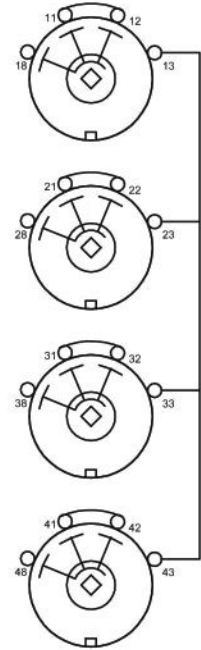
- * Sections: 4
- * Positions: 2 (See Contact Table) Maintained
- * Indexing: 90° positive detent
- * Engraved Front Plate supplied
- * Rotational Life: 65,000 operations

Materials and Finishes:

- * Rotors and Stators: Thermoset Plastic, UL 94VO
- * Rotor contacts: Phosphor bronze
- * Stator contacts: Silver plated copper, screw type
- * Terminal hardware: silver plated brass
- * Exterior Metal: Steel with zinc chromate finish
Aluminum with black anodize



DECK	CONTACTS	POSITION	
		1	2
1	11/12	○	○
	18	○	○
2	21/22	○	○
	28	○	○
3	31/32	○	○
	38	○	○
4	41/42	○	○
	48	○	○



18327-2

REV. A



308 COMPONENTS DRIVE
SMITHFIELD, NC 27577 USA