

Shallco

Since 1967

SHALLCO, INC

PRECISION ELECTRICAL COMPONENTS

SMITHFIELD INDUSTRIAL PARK • P.O. BOX 1089 • SMITHFIELD, N.C. 27577
 TELEPHONE: 919 / 934-3135 • FAX: 919 / 934-3298

SERIES 16 KEY OPERATED SWITCHES

General:

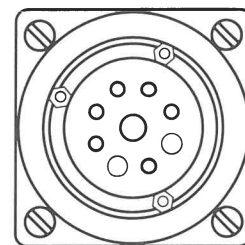
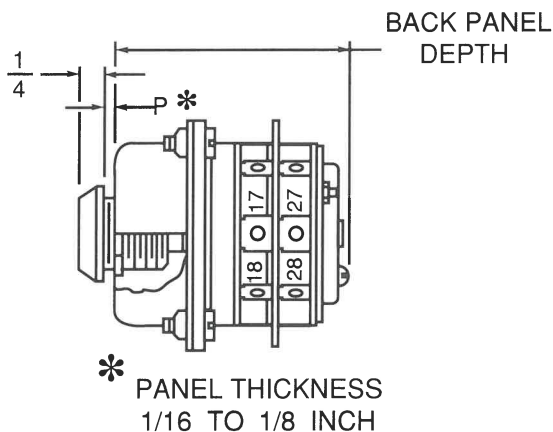
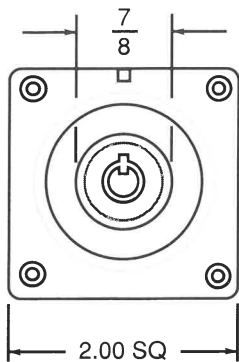
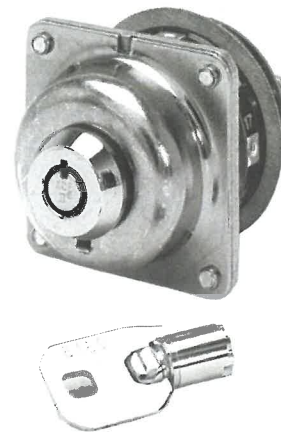
Meets requirements for 1 to 10 ampere switching of resistive loads to .75 power factor at voltages to 600 VAC and 28 VDC resistive loads (U.L. Recognized)

Electrical:

- Voltages: 28 VDC, 600 VAC
- Current carrying capacity: 10 amperes
- Dielectric withstanding voltage: 1500 rms, initial
- Contact resistance: Initial, 10 milliohms max.
- Insulation resistance: 1000 megohms, initial

Materials and Finishes:

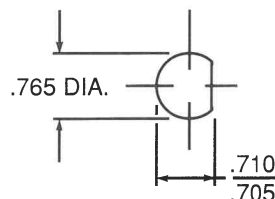
- Rotors and stators: thermoset plastic, UL 94VO
- Rotor contacts: silver-plated phosphor-bronze
- Stator contacts: silver-plated copper
- Lock: nickel-plated brass (2 keys supplied)
- Switch frame: steel, zinc-plated plus chromate
- Terminal hardware: silver-plated brass, supplied



Mechanical:

- Sections: 1 to 6
- Positions: 8, adjustable, 2 to 7 and Off, or continuous
- Indexing: 45° positive detent
- Rotational life: 10,000 cycles
- Terminals: screw type
- Approximate weight:
Single deck switch: 230 grams
Each additional deck: 25 grams
- Normal mounting hardware: supplied

MOUNTING HOLE DETAIL



BACK PANEL DEPTH

| DECK(S) | INCHES |
|---------|--------|
| 1 | 1.83 |
| 2 | 2.20 |
| 3 | 2.57 |
| 4 | 2.94 |
| 5 | 3.30 |
| 6 | 3.67 |

Shallco

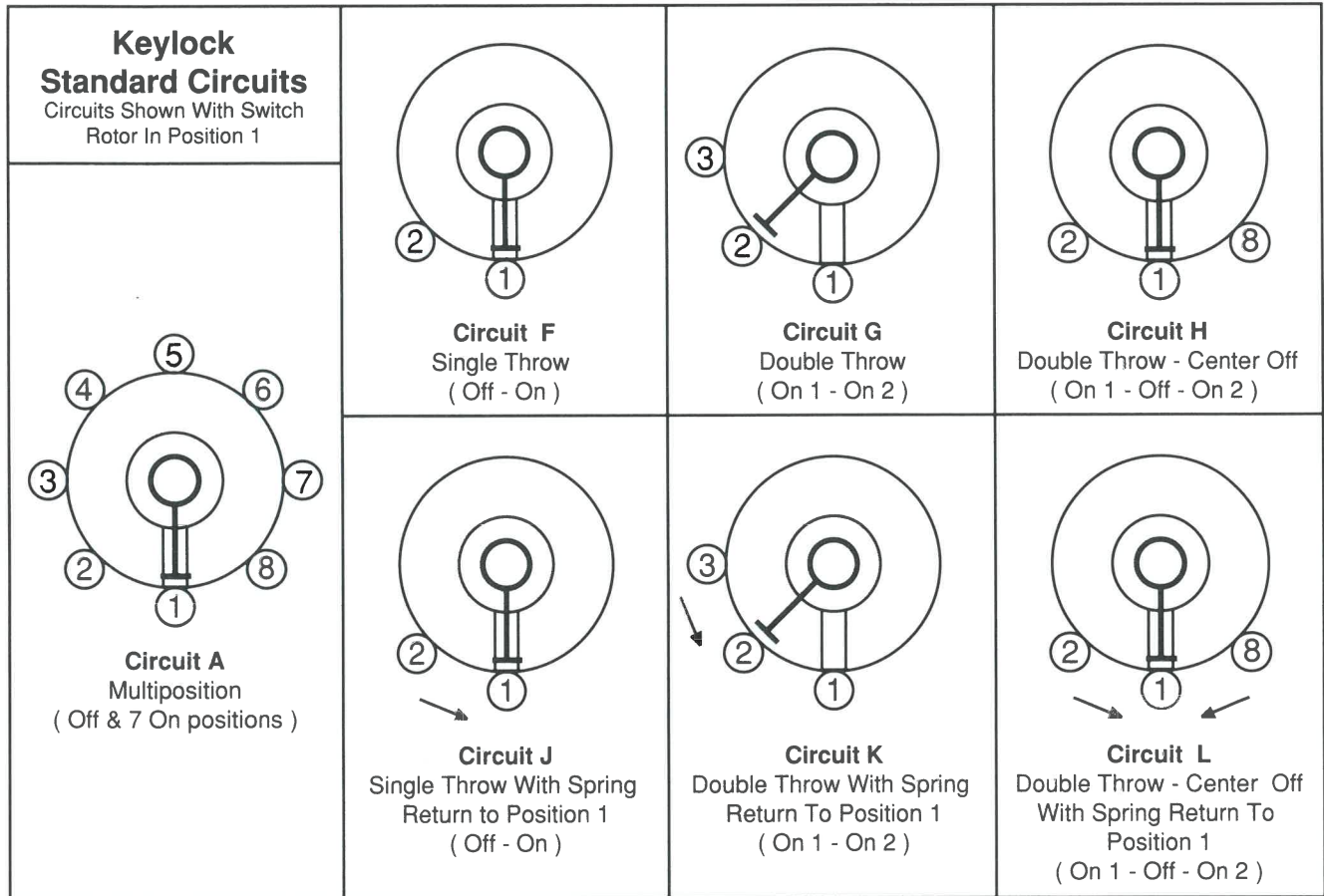
Since 1967

SHALLCO, INC

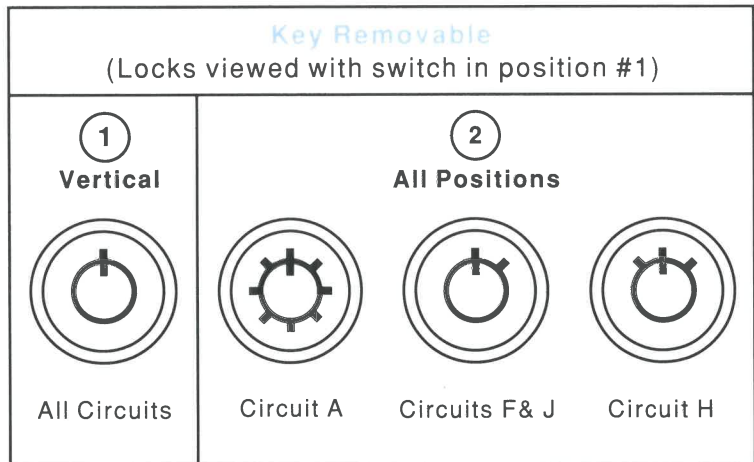
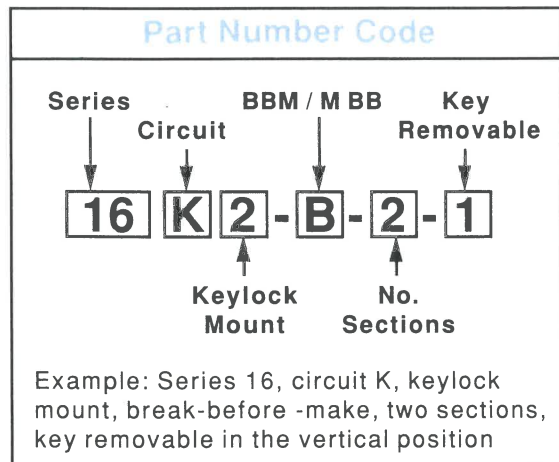
PRECISION ELECTRICAL COMPONENTS

SMITHFIELD INDUSTRIAL PARK • P.O. BOX 1089 • SMITHFIELD, N.C. 27577
 TELEPHONE: 919 / 934-3135 • FAX: 919 / 934-3298

SERIES 16 KEY OPERATED SWITCHES



Maximum of 6 sections available for circuits A, F, G, and H
 Maximum of 2 sections available for circuits J, K, and L



Custom Circuits Available

Series 16 switches can be customized to accommodate special-purpose applications. Shorting and non-shorting rotor blades and contact / terminals permit circuit designers great flexibility. We invite your inquiries regarding a specific application. Shallco technical assistance is available by telephone and facsimile immediately. Sample units for custom applications can be supplied at nominal cost and assigned a unique part number to define your design.