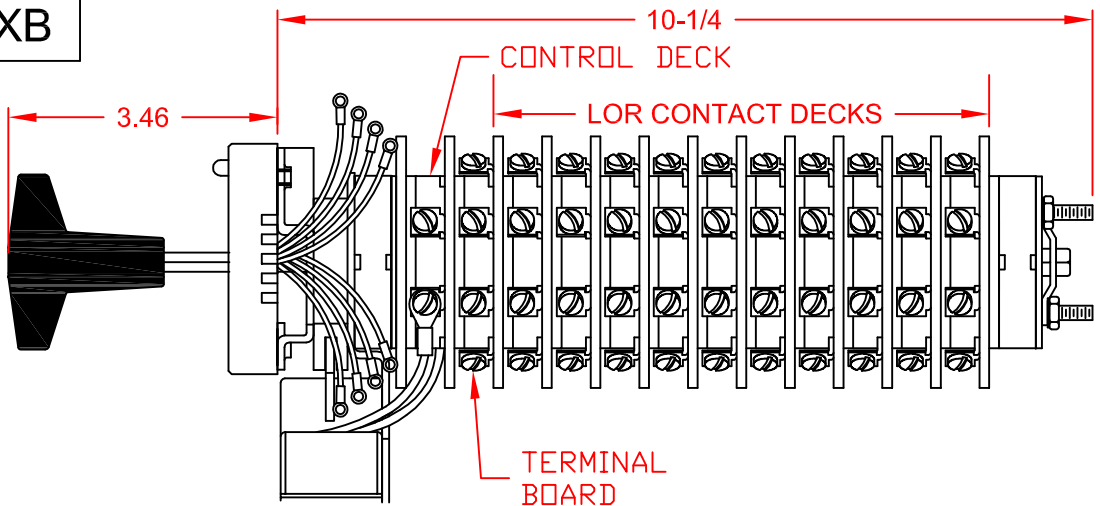
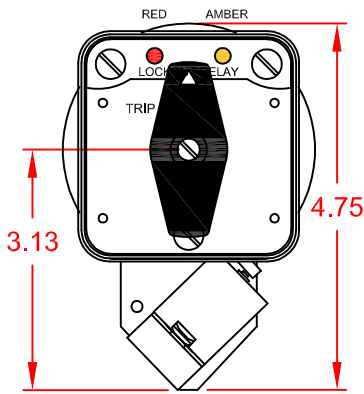


7610D 125VDCAXB



SPECIFICATIONS:

NO. OF POSITIONS: 2, TRIP AND RESET

NO. OF SECTIONS: 10

CONTACTS: 2 NORMALLY OPEN
2 NORMALLY CLOSED
PER DECK

ACTION: 45° POSITIVE TRIP DETENT

STATIONARY CONTACTS : SILVER OVER COPPER

NAMEPLATE: AS SHOWN

COIL SPECIFICATIONS:

OPERATING VOLTAGE: 125 VDC / 120 VAC

THRESHOLD VOLTAGE: 16 VDC / 20 VAC

OPERATING RANGE: 30 - 140 VDC / 30 - 140 VAC

CURRENT AT RATED VOLTAGE: 4.6 / 4.4 AMPS

ELECTRICAL RATINGS:

25A/120 VAC

15A/600 VAC

20A/600 VAC (RESISTIVE)

3A/125 VDC

1A/250 VDC



OVERLOAD CURRENT

(50 OPERATIONS):

95 A/120 VAC

65 A/240 VAC

35 A/600 VAC

DIELECTRIC STRENGTH:

2200 VRMS

INSULATION RESISTANCE:

100 MEGOHMS INITIAL

CONTACT RESISTANCE:

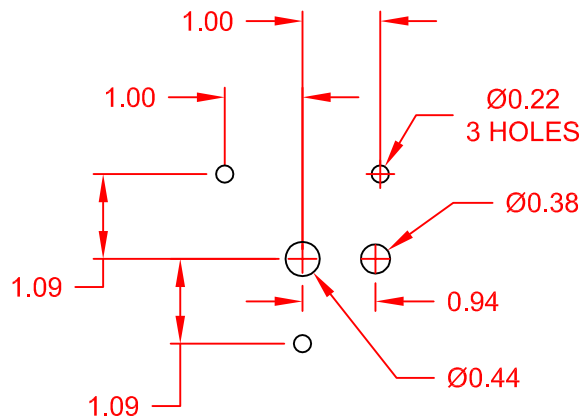
10 MILLIOHMS MAX. INITIAL

CUSTOMER INFORMATION::

TERMINAL SCREW TIGHTENING TORQUE: : 8 IN-LBS.

DECK	CONTACTS	POSITION	
		TRIP	RESET
1	11 - 13		
	12 - 18	X	X
	15 - 17		
	16 - 14	X	X
2	21 - 23		
	22 - 28	X	X
	25 - 27		
	26 - 24	X	X
3	31 - 33		
	32 - 38	X	X
	35 - 37		
	36 - 34	X	X
4	41 - 43		
	42 - 48	X	X
	45 - 47		
	46 - 44	X	X
5	51 - 53		
	52 - 58	X	X
	55 - 57		
	56 - 54	X	X

DECK	CONTACTS	POSITION	
		TRIP	RESET
6	61 - 63		
	62 - 68	X	X
	65 - 67		
	66 - 64	X	X
7	71 - 73		
	72 - 78	X	X
	75 - 77		
	76 - 74	X	X
8	81 - 83		
	82 - 88	X	X
	85 - 87		
	86 - 84	X	X
9	91 - 93		
	92 - 98	X	X
	95 - 97		
	96 - 94	X	X
10	101 - 103		
	102 - 108	X	X
	105 - 107		
	106 - 104	X	X



PANEL DRILLING

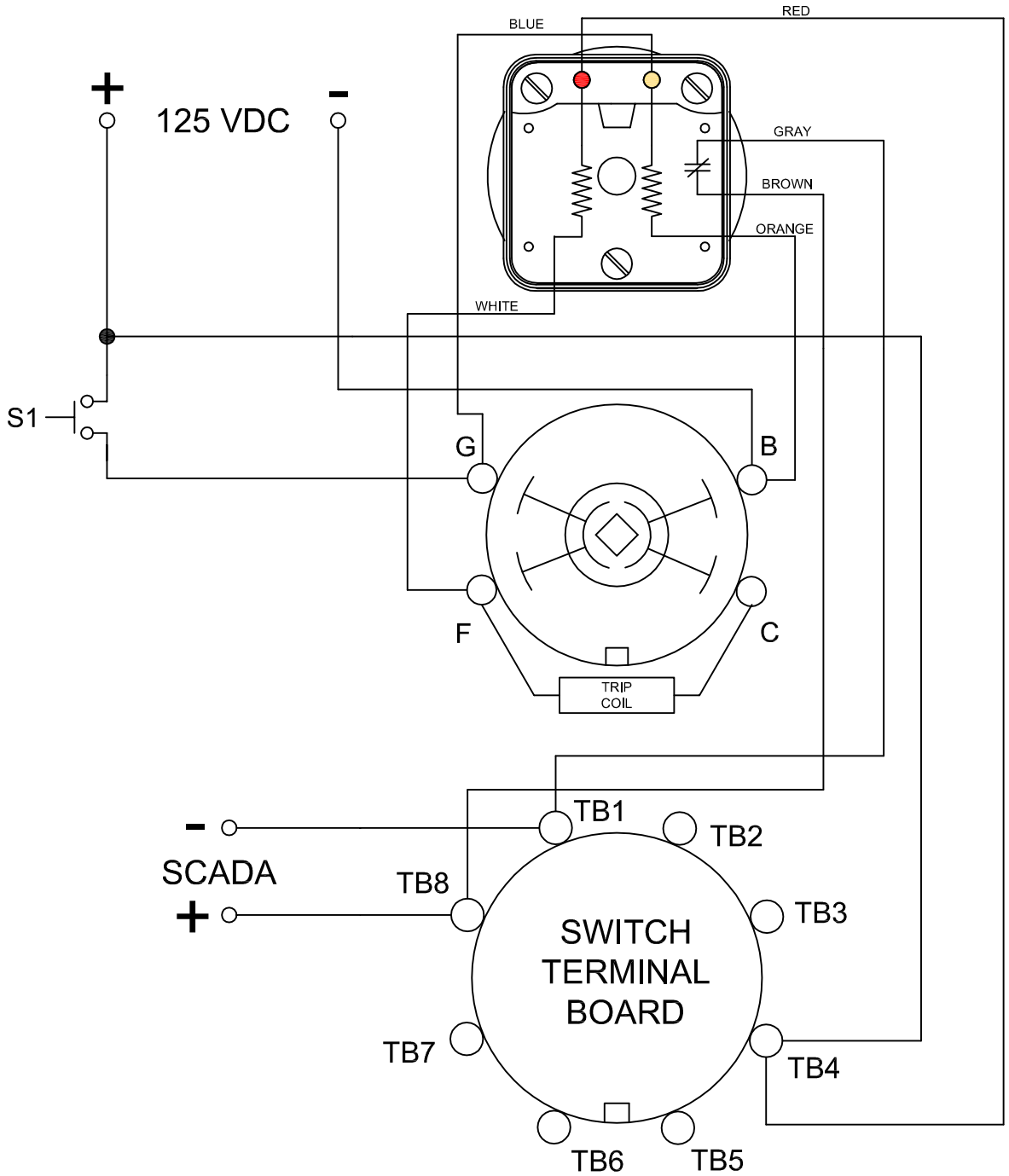
PART NUMBER

7610D 125VDCAXB



308 COMPONENTS DRIVE
SMITHFIELD, NC 27577 USA

7610D 125VDCAXB



DESCRIPTION

7610D 125VDCAXB

SHALLCO
AN ISO 9001 COMPANY

308 COMPONENTS DRIVE
SMITHFIELD, NC 27577 USA

7610D 125VDCAXB

LOCK-OUT RELAYS (LOR)

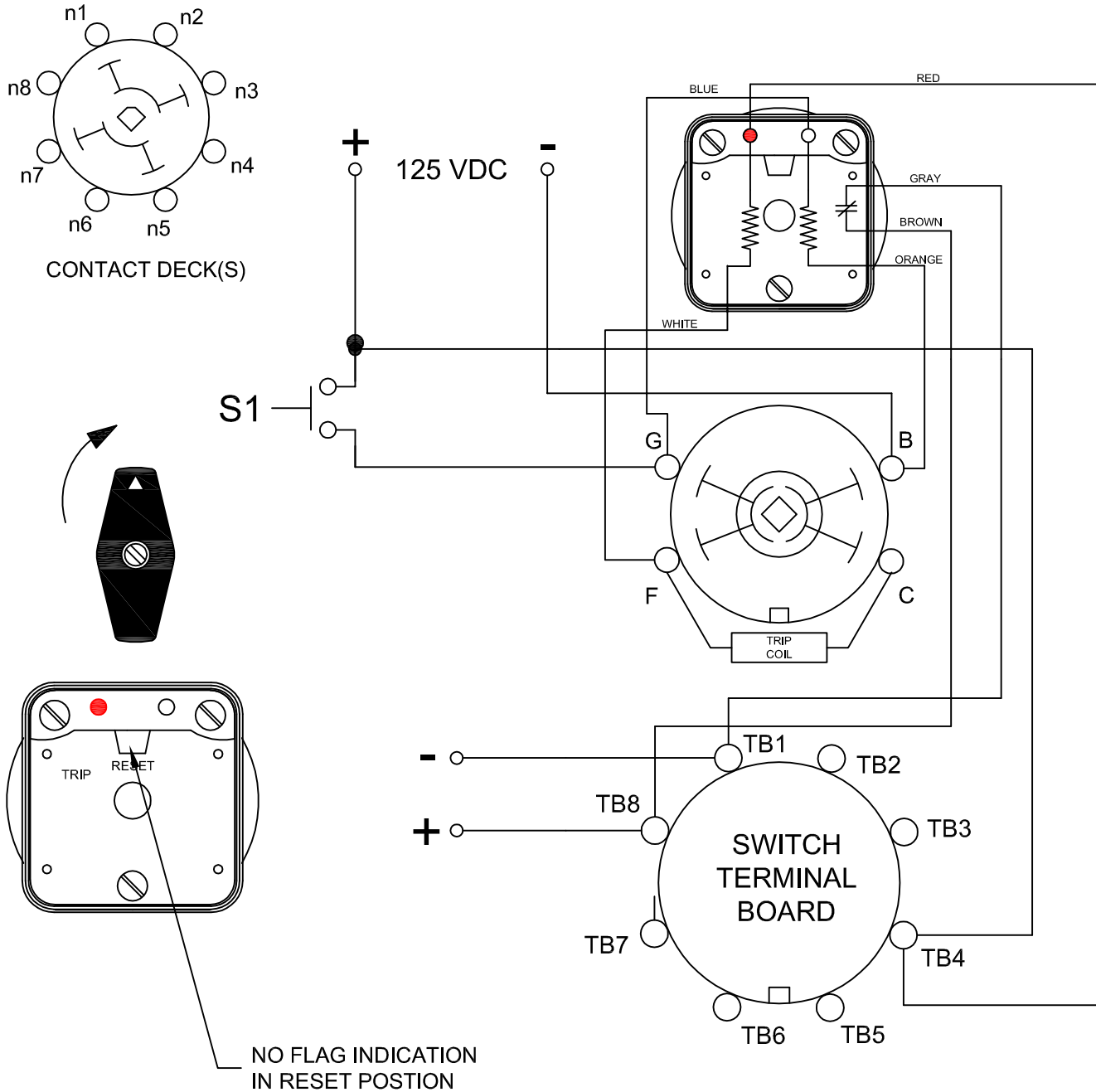
GENERAL OPERATION:

THE HANDLE OF THE LOR MUST BE MANUALLY ROTATED CLOCKWISE TO PLACE THE UNIT IN THE "RESET" POSITION (SEE FIGURE A)

CONDITION #1	
ROTOR	RESET (AS SHOWN)
SWITCH 1 (S1)	OPEN

RESULT	
LEFT LED	ON
RIGHT LED	OFF
SCADA CIRCUIT (TRIP COIL MONITOR)	OPEN

FIGURE A - RESET POSITION



DESCRIPTION

7610D 125VDCAXB

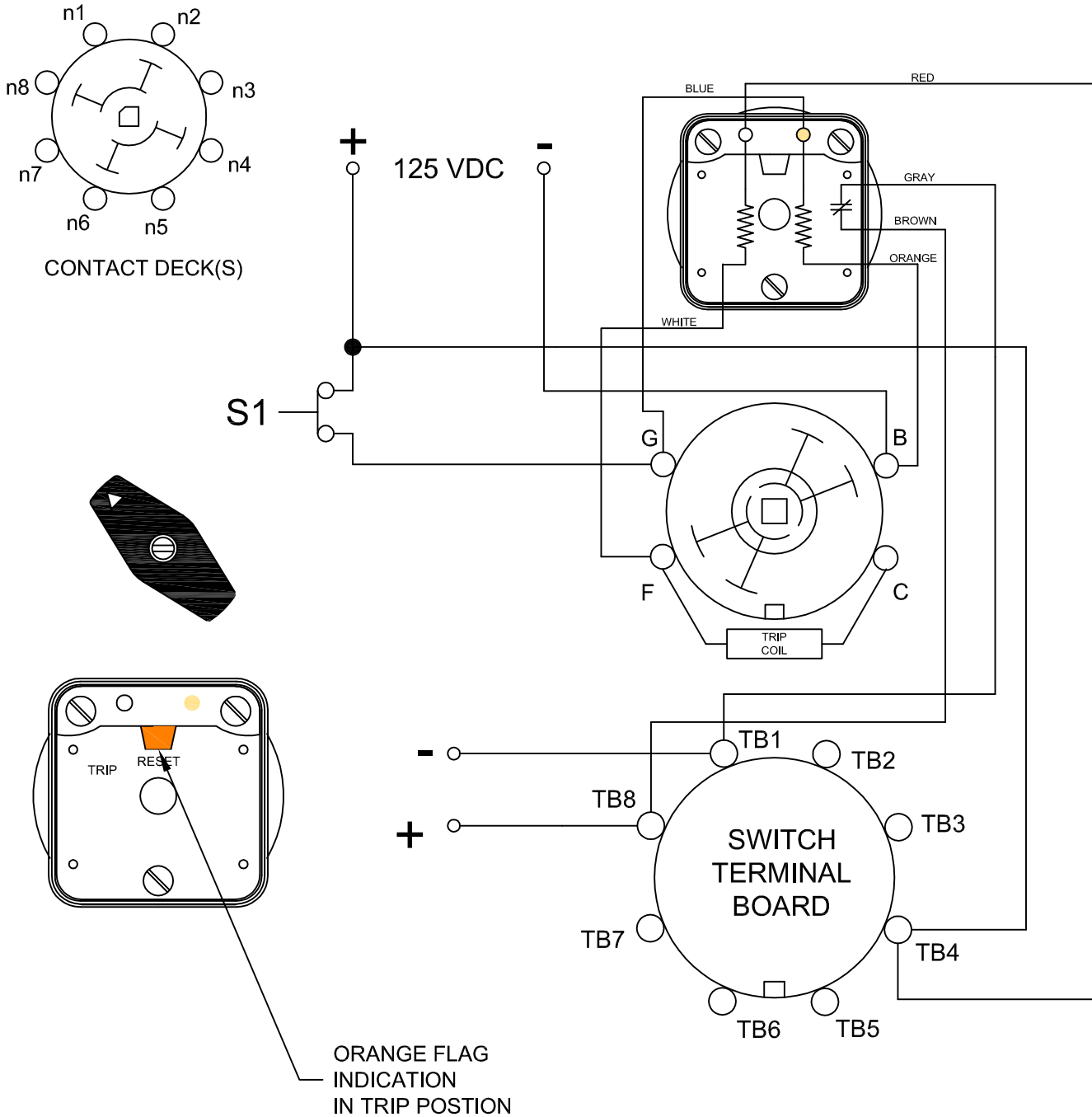
7610D 125VDCAXB

CONDITION #2	
ROTOR	TRIP(AS SHOWN)
SWITCH 1 (S1)	CLOSED

RESULT	
LEFT LED	OFF
RIGHT LED	ON
SCADA SWITCH	CLOSED

WHEN S1 CLOSES, THE COIL CAUSES A MECHANICAL ROTATION OF THE RELAY RESULTING IN THE SWITCH ROTOR ADVANCE TO THE "TRIP" POSITION SHOWN

FIGURE B - TRIP POSITION



DESCRIPTION
7610D 125VDCAXB



308 COMPONENTS DRIVE
SMITHFIELD, NC 27577 USA

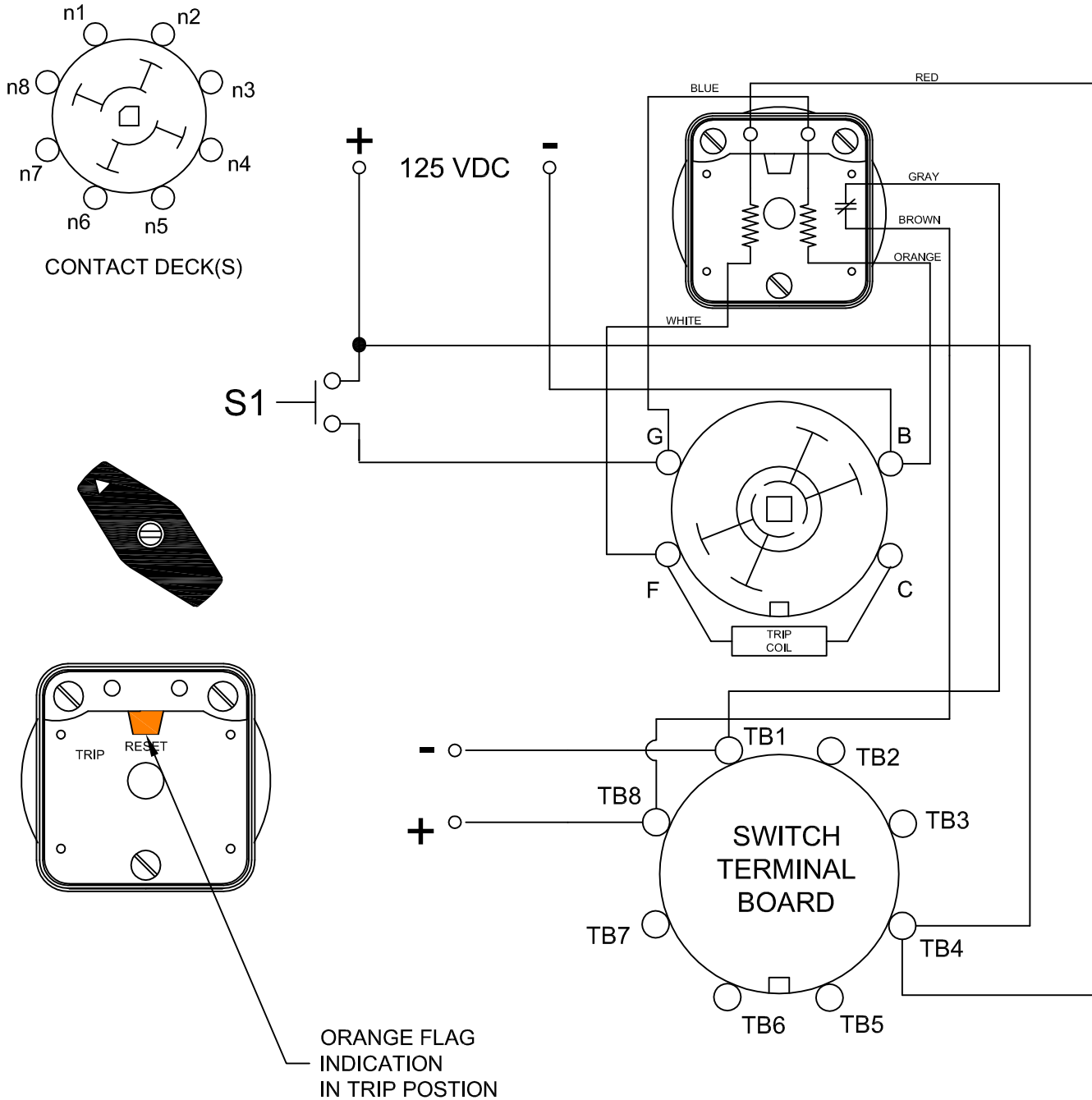
7610D 125VDCAXB

CONDITION #2	
ROTOR	TRIP (AS SHOWN)
SWITCH 1 (S1)	OPEN

RESULT	
LEFT LED	OFF
RIGHT LED	OFF
SCADA SWITCH	CLOSED

WHEN S1 REOPENS, THE SCADA CIRCUIT REMAINS CLOSED AND THE RIGHT LED GOES OFF UNTIL THE LOR IS RETURNED TO THE RESET POSITION.

FIGURE B - TRIP POSITION



DESCRIPTION

7610D 125VDCAXB