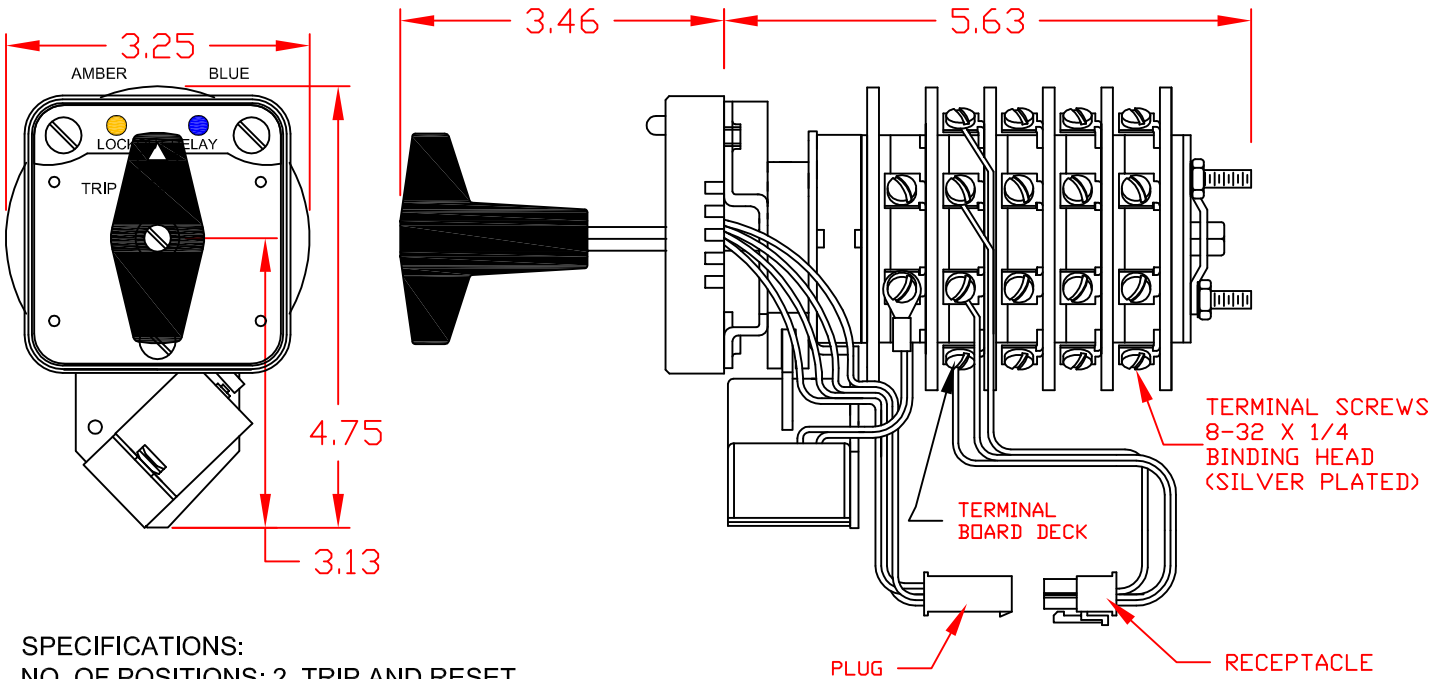


# 7603A 24VDCBXEWP



**SPECIFICATIONS:**

NO. OF POSITIONS: 2, TRIP AND RESET  
 NO. OF SECTIONS: 3  
 CONTACTS: 2 NORMALLY OPEN  
           2 NORMALLY CLOSED  
           PER DECK  
 ACTION: 45° POSITIVE TRIP DETENT  
 STATIONARY CONTACTS : SILVER OVER COPPER  
 NAMEPLATE: AS SHOWN

**COIL SPECIFICATIONS:**

OPERATING VOLTAGE: 24 VDC  
 THRESHOLD VOLTAGE: 6 VDC  
 OPERATING RANGE: 10 - 40 VDC  
 CURRENT AT RATED VOLTAGE: 7.3 AMPS

**ELECTRICAL RATINGS:**

25 A/120 VAC    3 A/ 125 VDC  
 15 A/600 VAC   1 A/ 250 VDC  
 20 A/600 VAC (RESISTIVE)



**OVERLOAD CURRENT (50 OPERATIONS):**

95 A/120 VAC  
 65 A/240 VAC  
 35 A/600 VAC

DIELECTRIC STRENGTH: 2200 VRMS

INSULATION RESISTANCE: 100 MEGOHMS INITIAL

CONTACT RESISTANCE: 10 MILLIOHMS MAX. INITIAL

DECK	CONTACTS	POSITION	
		TRIP	RESET
1	11 —  —  — 13		X
	12 —  —  — 18	X	
	15 —  —  — 17		X
	16 —  —  — 14	X	
2	21 —  —  — 23		X
	22 —  —  — 28	X	
	25 —  —  — 27		X
	26 —  —  — 24	X	
3	31 —  —  — 33		X
	32 —  —  — 38	X	
	35 —  —  — 37		X
	36 —  —  — 34	X	

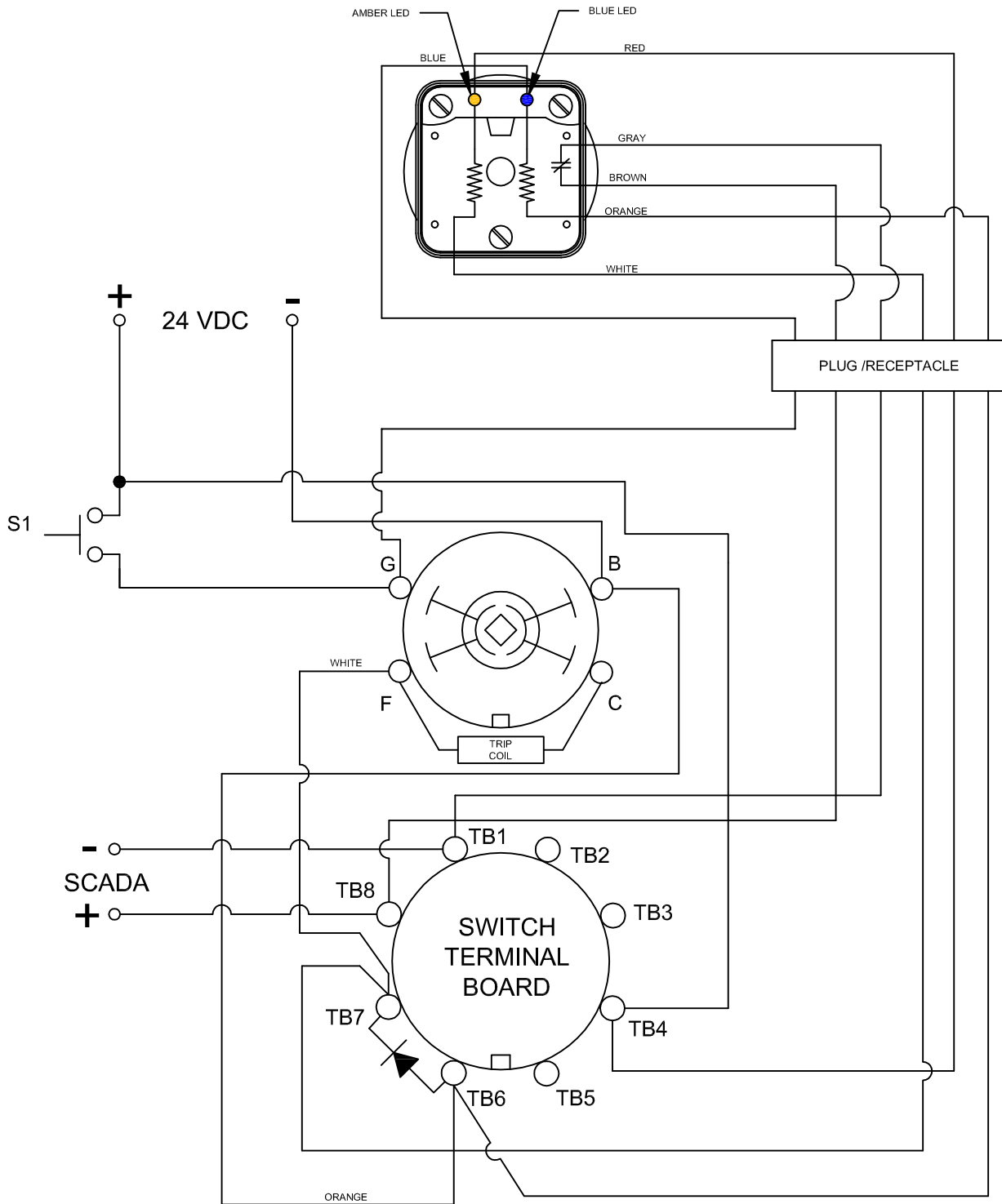
DESCRIPTION

LOCK-OUT RELAY SPECIFICATION SHEET

PART NUMBER

7603A 24VDCBXEWP

# 7603A 24VDCBXEWP



DESCRIPTION

LOCK-OUT RELAY SPECIFICATION SHEET

PART NUMBER

7603A 24VDCBXEWP

# 7603A 24VDCBXEWP

## LOCK-OUT RELAYS (LOR)

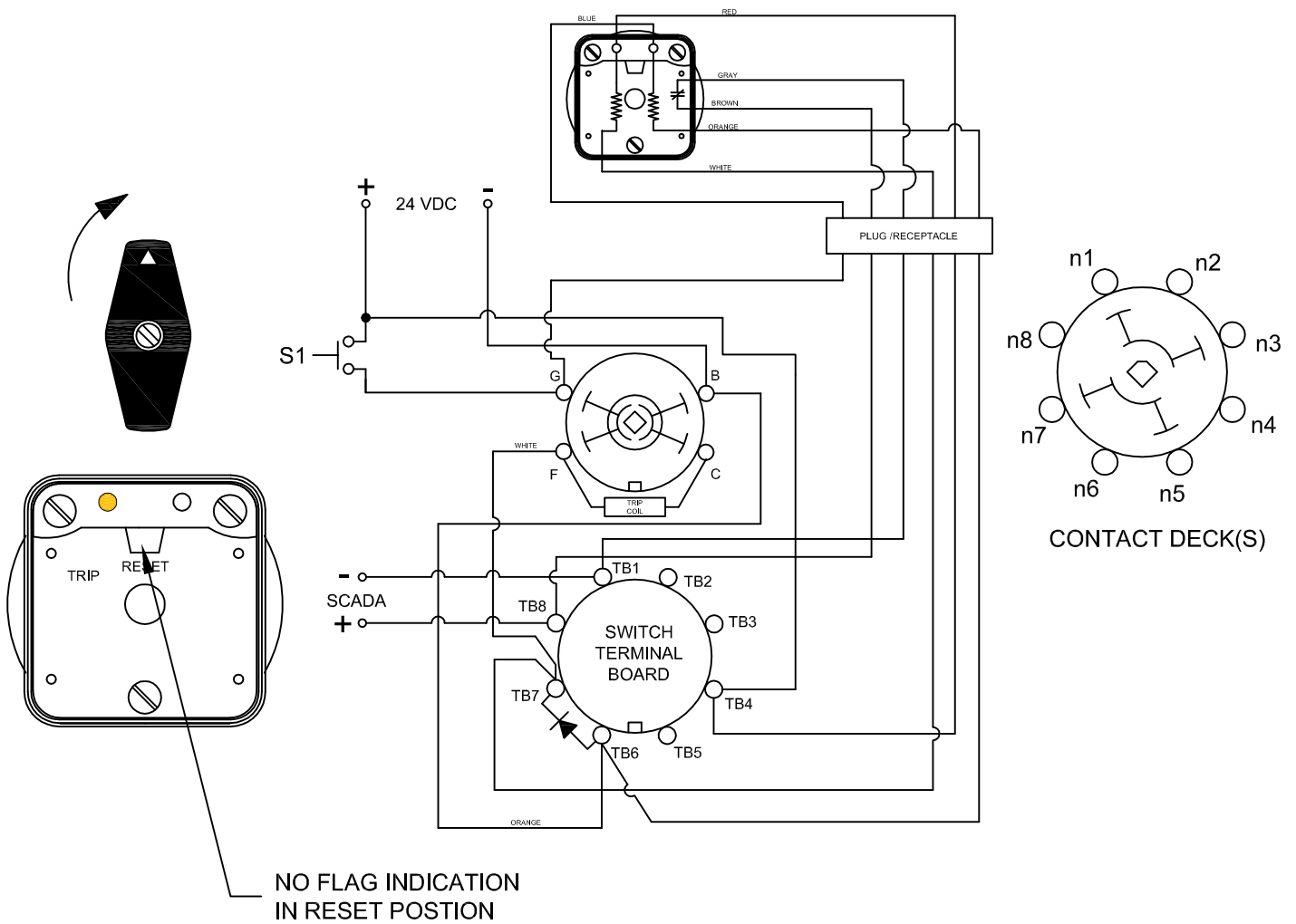
### GENERAL OPERATION:

THE HANDLE OF THE LOR MUST BE MANUALLY ROTATED CLOCKWISE TO PLACE THE UNIT IN THE "RESET" POSITION (SEE FIGURE A)

CONDITION #1	
ROTOR	RESET (AS SHOWN)
SWITCH 1 (S1)	OPEN

RESULT	
LEFT LED	ON
RIGHT LED	OFF
SCADA CIRCUIT (TRIP COIL MONITOR)	OPEN

FIGURE A - RESET POSITION



### DESCRIPTION

LOCK-OUT RELAY SPECIFICATION SHEET

### PART NUMBER

7603A 24VDCBXEWP

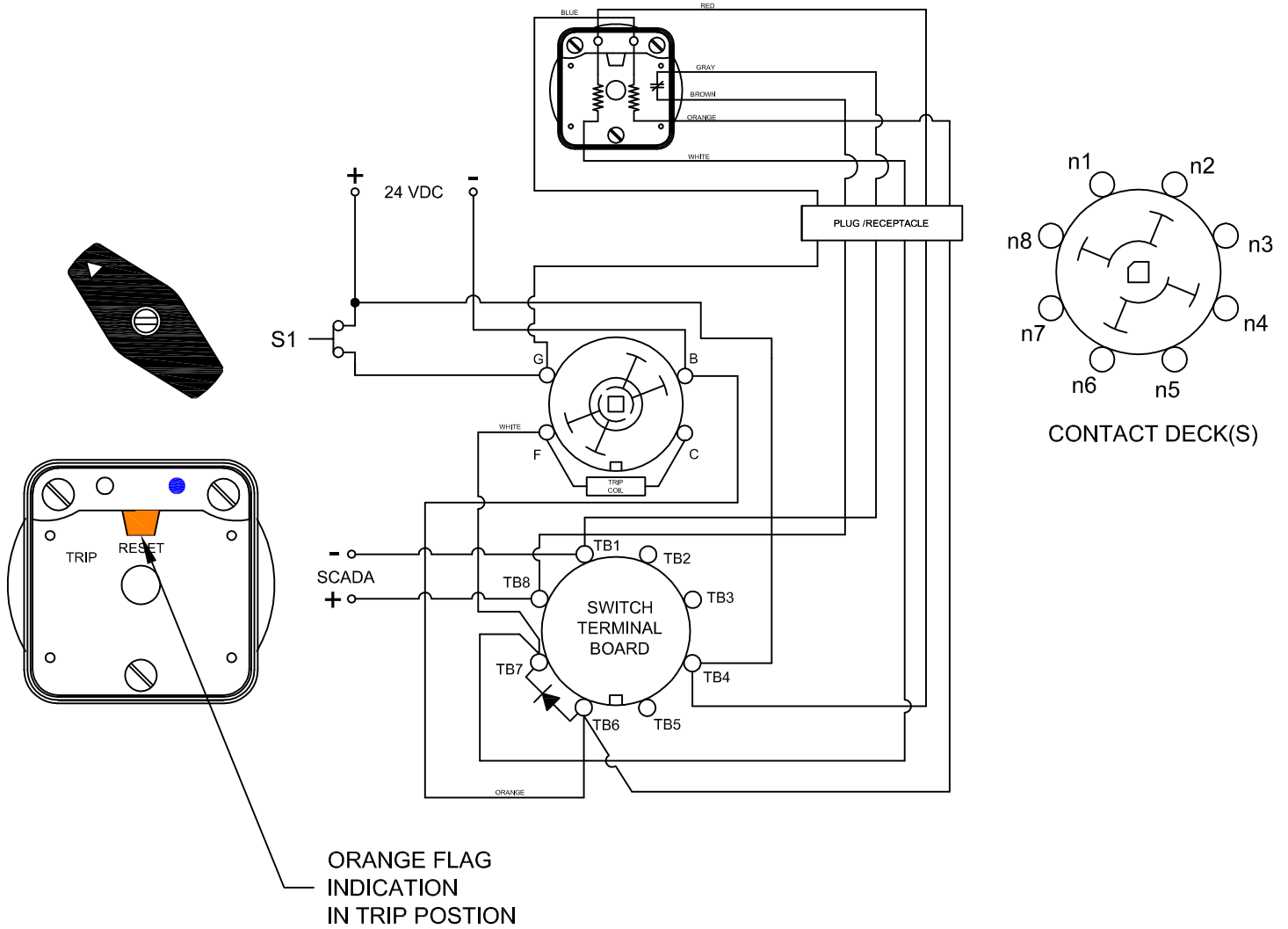
# 7603A 24VDCBXEWP

WHEN S1 CLOSSES, THE COIL CAUSES A MECHANICAL ROTATION OF THE RELAY RESULTING IN THE SWITCH ROTOR ADVANCE TO THE "TRIP" POSITION SHOWN

CONDITION #2	
ROTOR	RESET (AS SHOWN)
SWITCH 1 (S1)	CLOSED

RESULT	
LEFT LED	OFF
RIGHT LED	ON
SCADA SWITCH	CLOSED

FIGURE B - TRIP POSITION



DESCRIPTION

LOCK-OUT RELAY SPECIFICATION SHEET

PART NUMBER

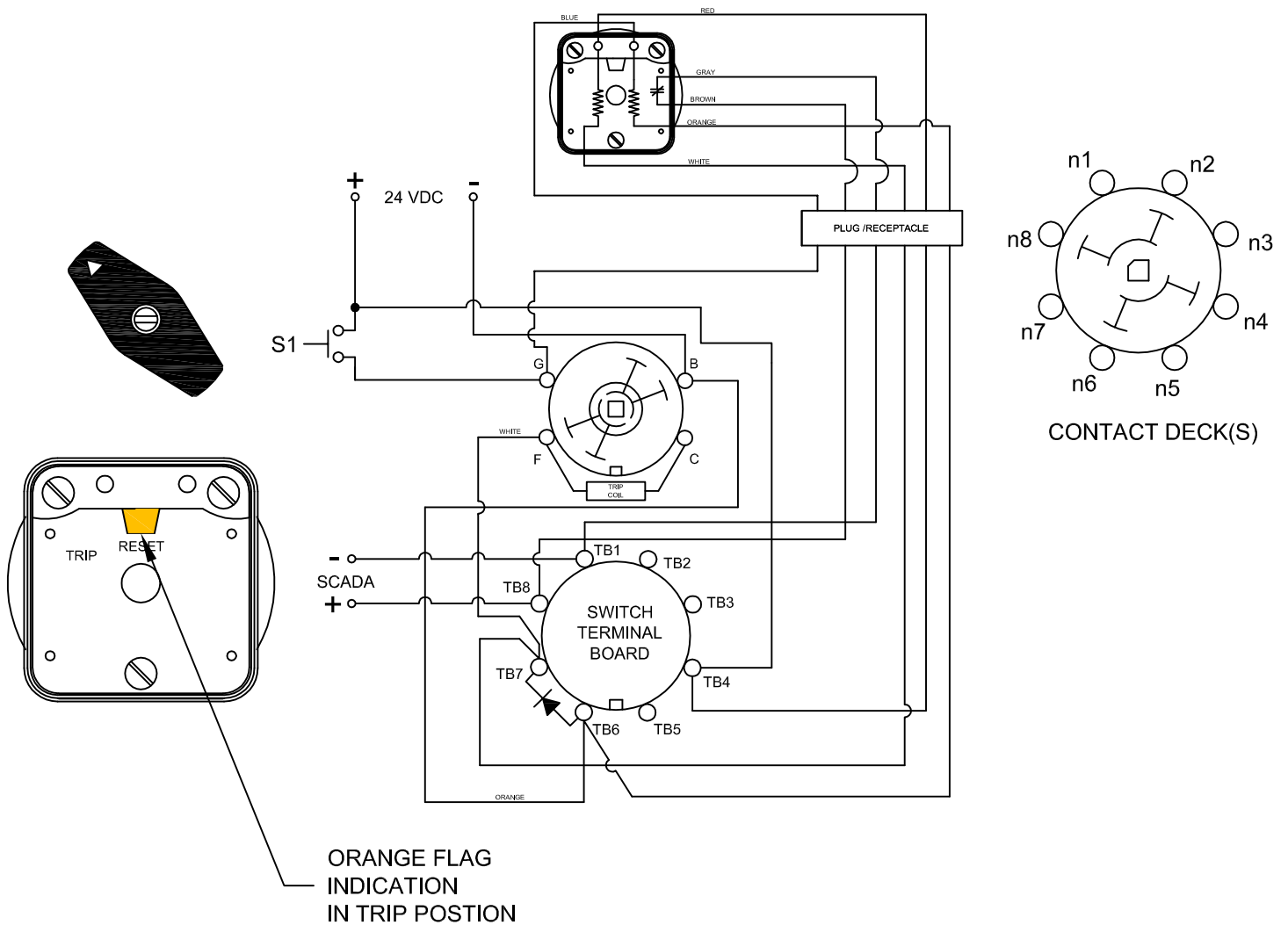
7603A 24VDCBXEWP

REVISIONS		
LTR	DESCRIPTION	DATE   APP'D

WHEN S1 OPENS, THE RIGHT LED WILL GO OFF. THE SCADA WILL REMAIN CLOSED AND ALL LED'S WILL REMAIN OFF UNTIL THE LOR IS ROTATED BACK TO THE RESET POSITION

CONDITION #2		RESULT	
ROTOR	RESET (AS SHOWN)	LEFT LED	OFF
SWITCH 1 (S1)	OPEN	RIGHT LED	OFF
		SCADA SWITCH	CLOSED

FIGURE B - TRIP POSITION



DESCRIPTION  
**LOCK-OUT RELAY SPECIFICATION SHEET**

PART NUMBER  
**7603A 24VDCBXEWP**