

SHALLCO SERIES 1 SNAP ACTION SWITCHES

PART NUMBER 1A01-2

ELECTRICAL:
RATINGS (UL):

- 16A @ 250 VAC
- 16A @ 250 VDC
- 7.5A @ 600 VAC
- 3 / 4 HP @ 240 VAC

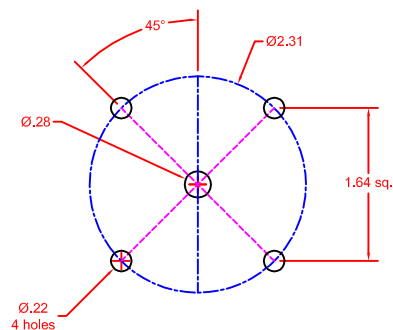
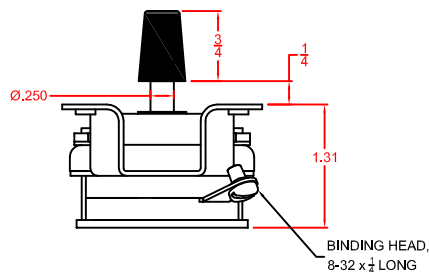
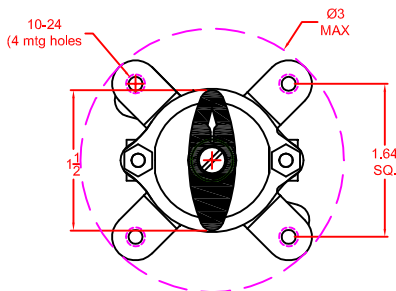


VOLTAGE: 600 VAC, 250 VDC
SWITCHING CAPACITY: UP TO 16 AMPERES
DIELECTRIC WITHSTANDING VOLTAGE: 2500 VRMS INITIAL
CONTACT RESISTANCE: 10 MILLIOHMS MAX.
INSULATION RESISTANCE: 1000 MEGHOHMS MIN. INITIAL

MECHANICAL:

- POLES: 1
- POSITIONS: 2 (OFF-ON)
- INDEXING: 90°
- CONTACTS: BREAK BEFORE MAKE
- TERMINAL TYPE: SCREW
- CONSTRUCTION: CLOSED

SUPPLIED WITH TERMINAL
SCREWS AND KNOB

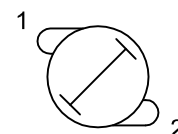
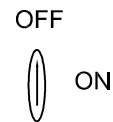


MOUNTING DETAIL

KNOB



CIRCUIT



DESCRIPTION

1A01-2

REV A



308 COMPONENTS DRIVE
SMITHFIELD, NC 27577 USA