

# SHALLCO SERIES 1 SWITCH



PART NUMBER 1A01-2SR

**ELECTRICAL:**

**RATINGS (UL):**

- 16A @ 250 VAC 16A @ 250 VDC
- 7.5A @ 600 VAC
- 3/4 HP @ 240 VAC



VOLTAGE: 600 VAC, 250 VDC

SWITCHING CAPACITY: UP TO 16 AMPERES

DIELECTRIC WITHSTANDING VOLTAGE: 2500 VRMS INITIAL

CONTACT RESISTANCE: 10 MILLIOHMS MAX. (4 MILLIOHMS AVERAGE)

INSULATION RESISTANCE: 1000 MEGHOHMS MIN. INITIAL

**MECHANICAL:**

POLES: 1

POSITIONS: 2 - MOMENTARY

(SPRING RETURN FROM ON BACK TO OFF)

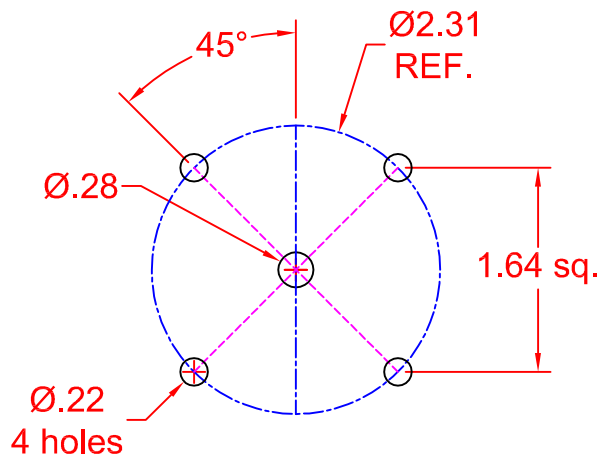
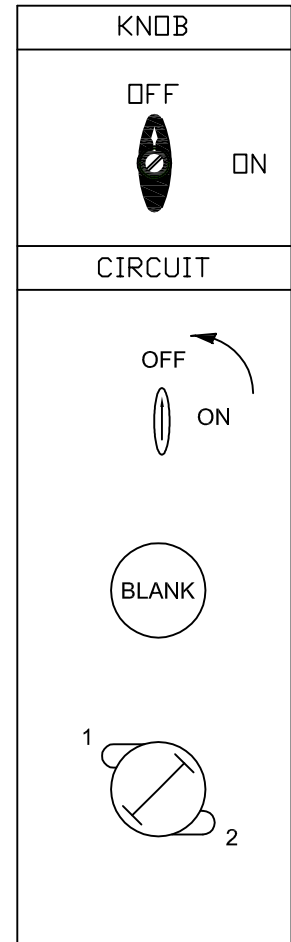
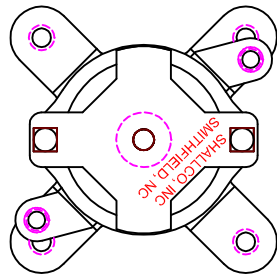
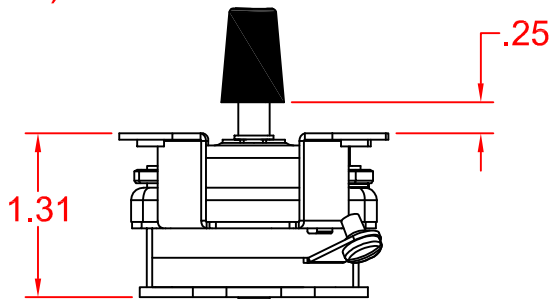
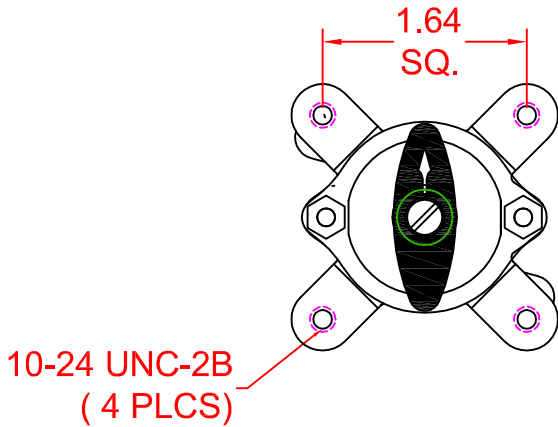
INDEXING: 90°

CONTACTS: BREAK BEFORE MAKE

TERMINAL TYPE: SCREW

CONSTRUCTION: CLOSED

SUPPLIED WITH TERMINAL SCREWS AND KNOB



MOUNTING DETAIL

DESCRIPTION

1A01-2SR



308 COMPONENTS DRIVE  
SMITHFIELD, NC 27577 USA