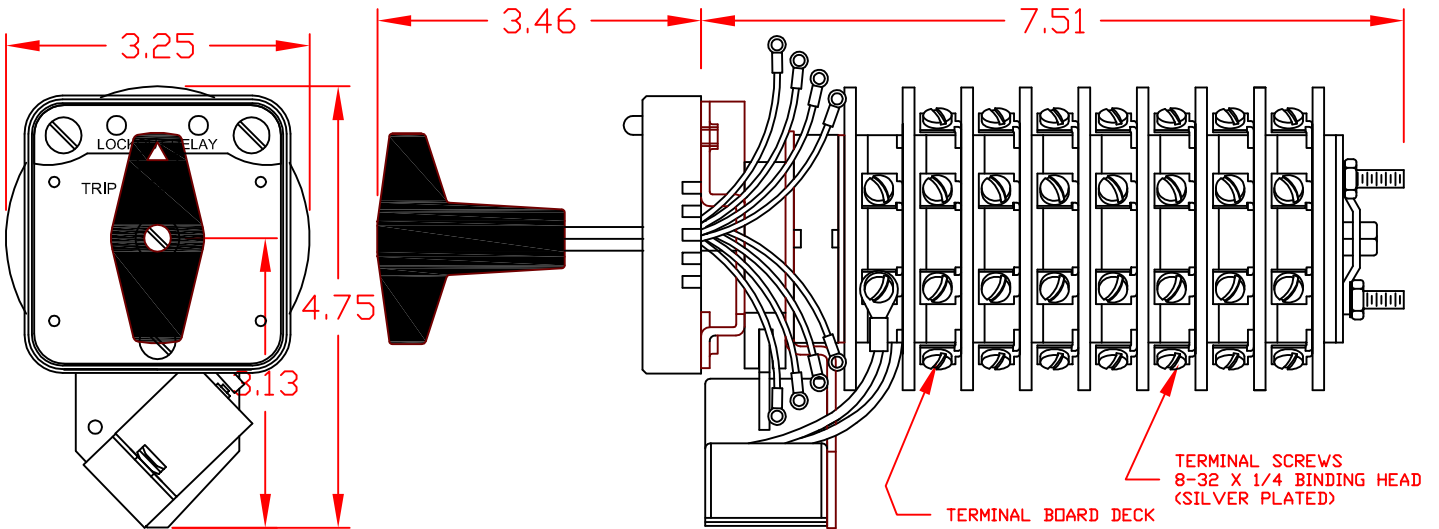


7606E 125VDCAXC



SPECIFICATIONS:

NO. OF POSITIONS: 2, TRIP AND RESET
 NO. OF SECTIONS: 7
 CONTACTS: 2 NORMALLY OPEN
 2 NORMALLY CLOSED
 PER DECK
 ACTION: 45° POSITIVE TRIP DETENT
 STATIONARY CONTACTS : SILVER OVER COPPER
 NAMEPLATE: AS SHOWN

COIL SPECIFICATIONS:
 OPERATING VOLTAGE: 125 VDC
 THRESHOLD VOLTAGE: 23VDC
 OPERATING RANGE: 45 - 140 VDC
 CURRENT AT RATED VOLTAGE: 2.5 AMPS

ELECTRICAL RATINGS:
 25 A/120 VAC 3 A/ 125 VDC
 15 A/240 VAC 1 A/ 250 VDC
 6 A/600 VAC



OVERLOAD CURRENT (50 OPERATIONS):
 95 A/120 VAC
 65 A/240 VAC
 35 A/600 VAC

DIELECTRIC STRENGTH: 2200 VRMS

INSULATION RESISTANCE: 100 MEGOHMS INITIAL

CONTACT RESISTANCE: 10 MILLIOHMS MAX. INITIAL

DECK	CONTACTS		POSITION	
			TRIP	RESET
1	11	13		
	12	18	X	X
	15	17		X
	16	14	X	
2	21	23		
	22	28	X	X
	25	27		X
	26	24	X	
3	31	33		
	32	38	X	X
	35	37		X
	36	34	X	
4	41	43		
	42	48	X	X
	45	47		X
	46	44	X	
5	51	53		
	52	58	X	X
	55	57		X
	56	54	X	
6	61	63		
	62	68	X	X
	65	67		X
	66	64	X	

DESCRIPTION

LOCK-OUT RELAY SPECIFICATION SHEET

PART NUMBER

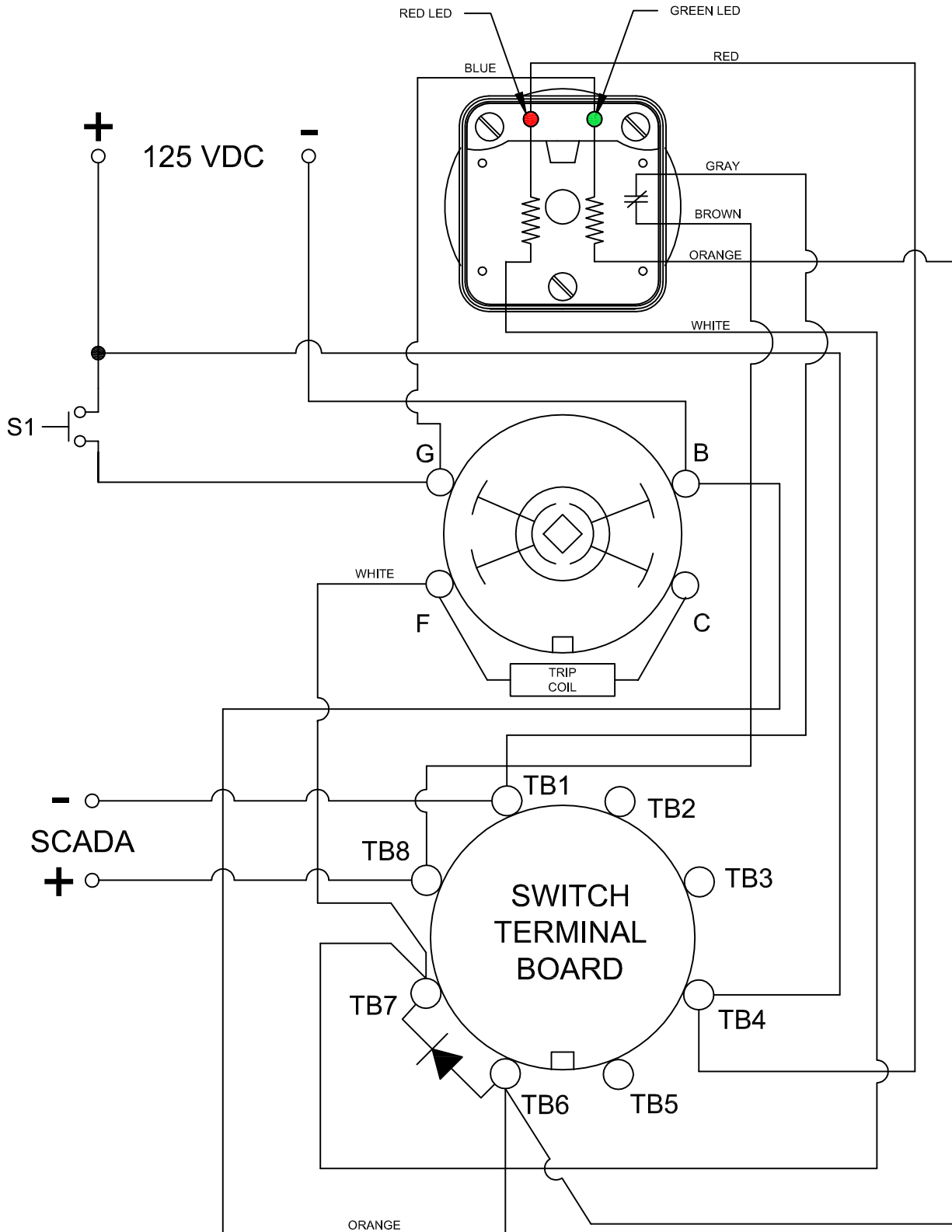
7606E 125VDCAXC



308 COMPONENTS DRIVE
 SMITHFIELD, NC 27577 USA

PAGE 1 OF 5

REV -



DESCRIPTION LIGHTED ESCUTCHEON PANEL WIRING DIAGRAM

PART NUMBER 7606E 125VDCAXC

LOCK-OUT RELAYS (LOR)

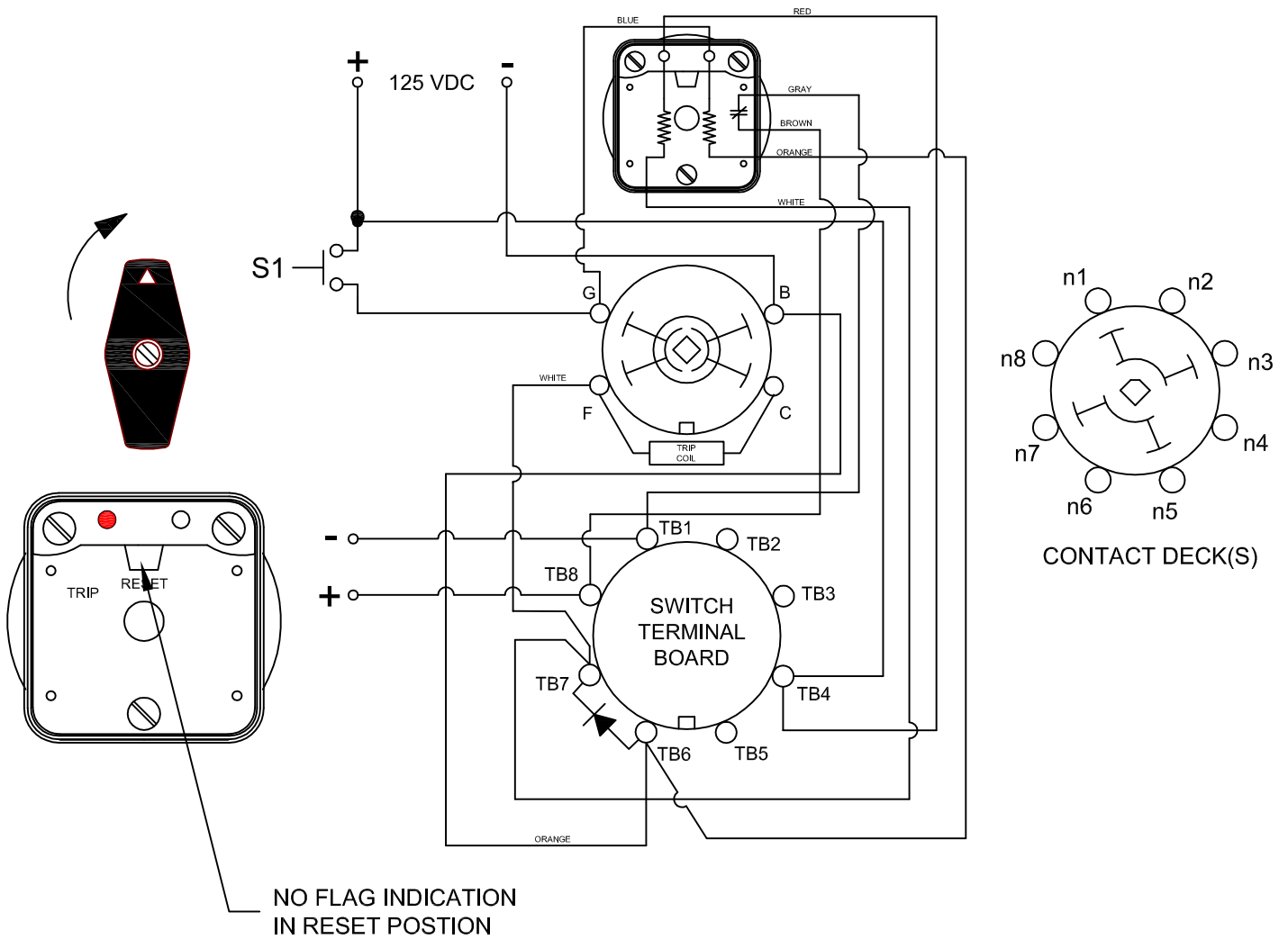
GENERAL OPERATION:

THE HANDLE OF THE LOR MUST BE MANUALLY ROTATED CLOCKWISE TO PLACE THE UNIT IN THE "RESET" POSITION (SEE FIGURE A)

CONDITION #1	
ROTOR	RESET (AS SHOWN)
SWITCH 1 (S1)	OPEN

RESULT	
LEFT LED	ON
RIGHT LED	OFF
SCADA CIRCUIT TRIP COIL MONITOR)	OPEN

FIGURE A - RESET POSITION



DESCRIPTION

LOCK-OUT RELAY SPECIFICATION SHEET

PART NUMBER

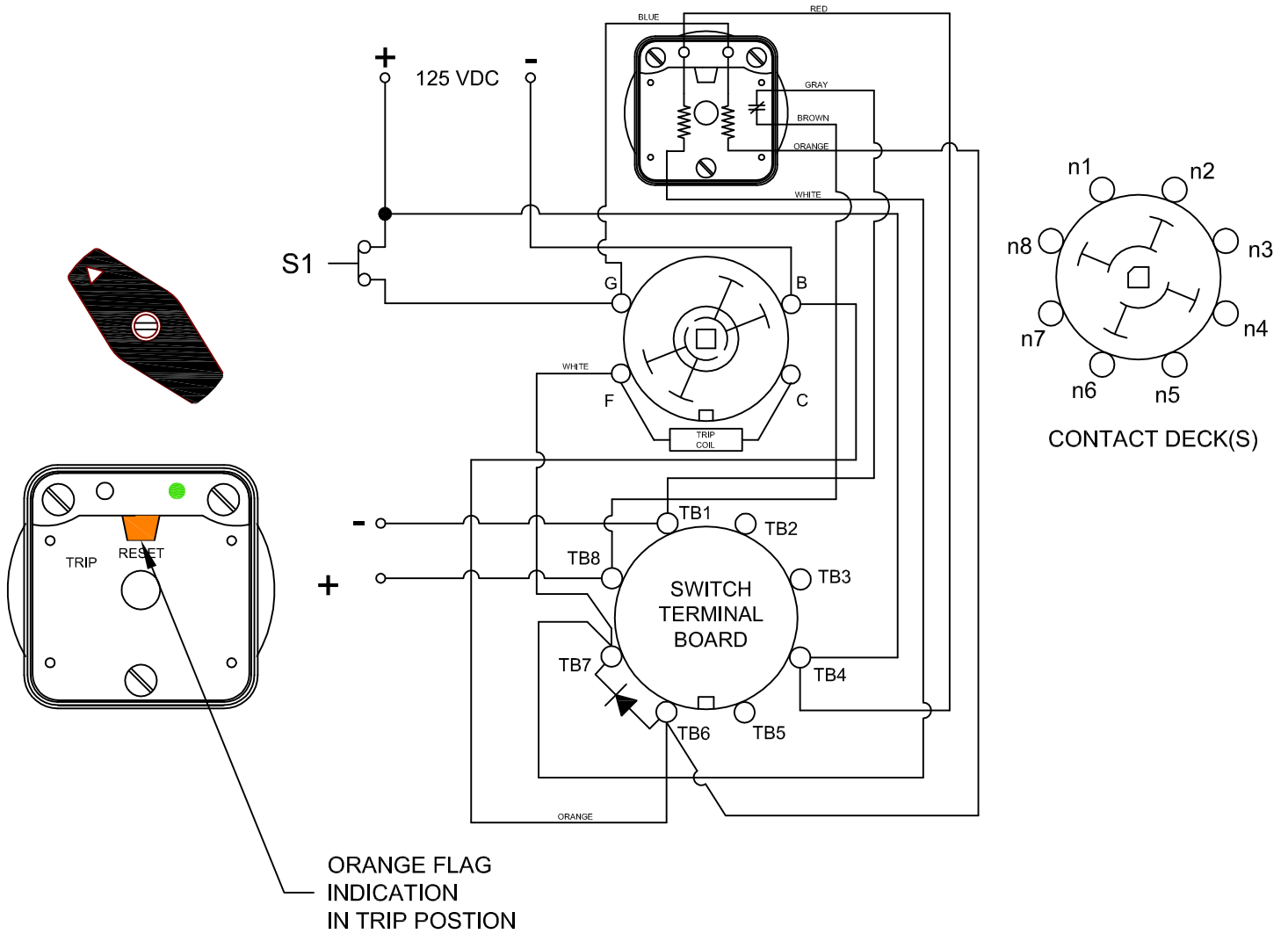
7606E 125VDCAXC

CONDITION #2	
ROTOR	TRIPPED (AS SHOWN)
SWITCH 1 (S1)	CLOSED

RESULT	
LEFT LED	OFF
RIGHT LED	ON
SCADA SWITCH	CLOSED

WHEN S1 CLOSES, THE COIL CAUSES A MECHANICAL ROTATION OF THE RELAY RESULTING IN THE SWITCH ROTOR ADVANCE TO THE "TRIP" POSITION SHOWN

FIGURE B - TRIP POSITION



DESCRIPTION

LOCK-OUT RELAY SPECIFICATION SHEET

PART NUMBER

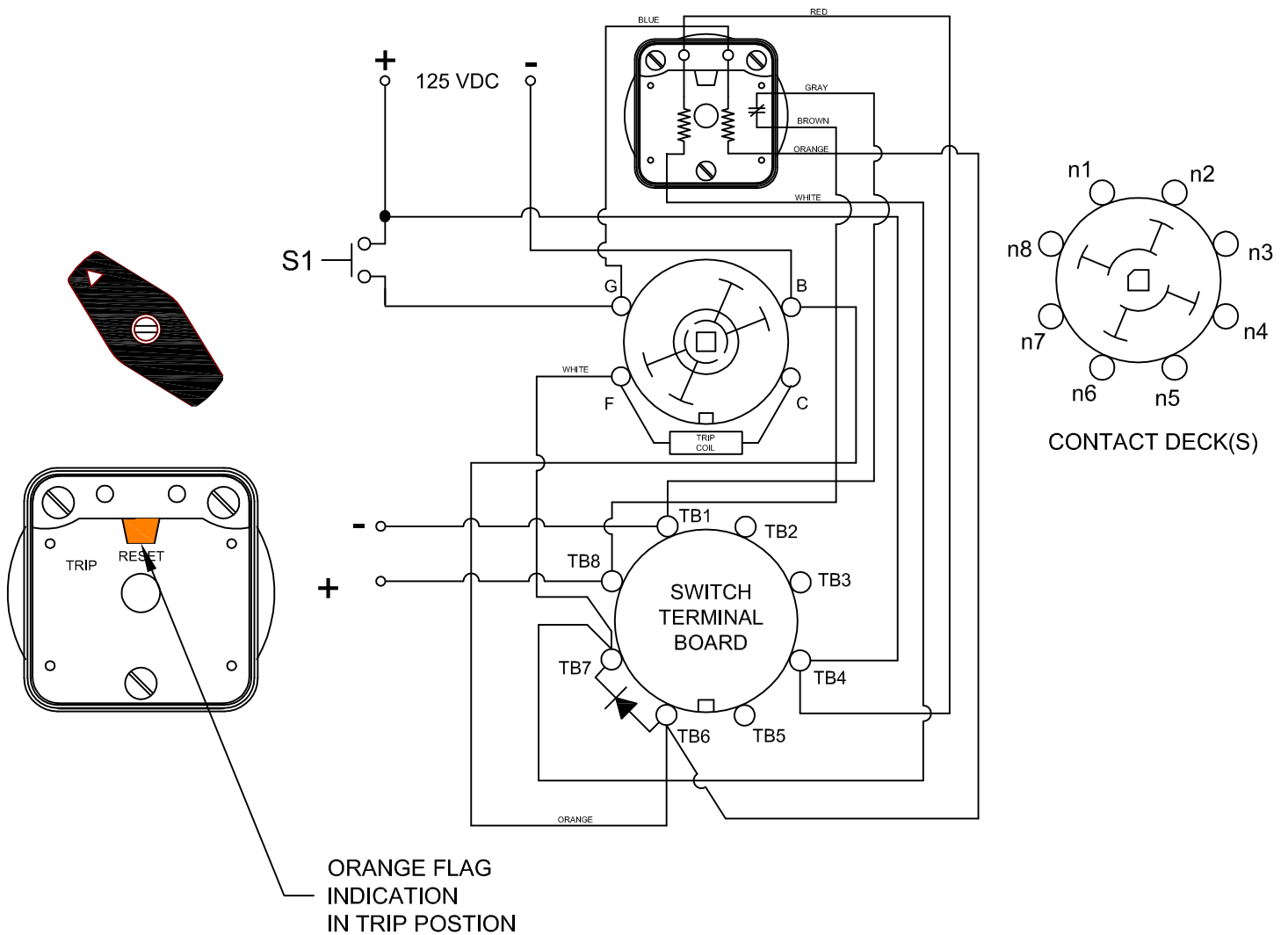
7606E 125VDCAXC

CONDITION #2	
ROTOR	RESET (AS SHOWN)
SWITCH 1 (S1)	OPEN

RESULT	
LEFT LED	OFF
RIGHT LED	OFF
SCADA SWITCH	CLOSED

WHEN S1 REOPENS, THE SCADA CIRCUIT WILL REMAIN CLOSED UNTIL THE LOR IS ROTATED BACK INTO THE RESET POSITION

FIGURE B - TRIP POSITION



DESCRIPTION

LOCK-OUT RELAY SPECIFICATION SHEET

PART NUMBER

7606E 125VDCAXC