

SPECIFICATIONS:

NO. OF POSITIONS: 2, TRIP AND RESET

NO. OF SECTIONS: 6

CONTACTS: 2 NORMALLY OPEN
2 NORMALLY CLOSED
PER DECK

ACTION: 45° POSITIVE TRIP DETENT

STATIONARY CONTACTS : SILVER OVER COPPER

NAMEPLATE: AS SHOWN

COIL SPECIFICATIONS:

OPERATING VOLTAGE: 125 VDC / 120 VAC

THRESHOLD VOLTAGE: 16 VDC / 20 VAC

OPERATING RANGE: 30 - 140 VDC / 30 - 140 VAC

CURRENT AT RATED VOLTAGE: 4.6 / 4.4 AMPS

ELECTRICAL RATINGS:

25 A/120 VAC 3 A/ 125 VDC

15 A/240 VAC 1 A/ 250 VDC

6 A/600 VAC

OVERLOAD CURRENT (50 OPERATIONS):

95 A/120 VAC

65 A/240 VAC

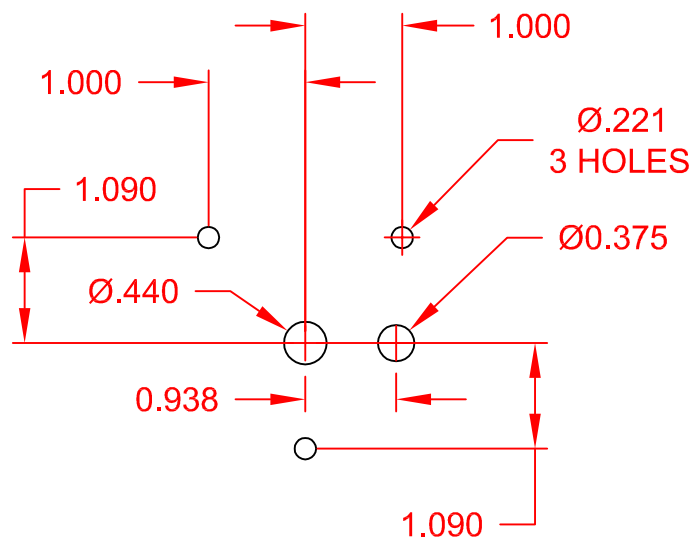
35 A/600 VAC

DIELECTRIC STRENGTH: 2200 VRMS

INSULATION RESISTANCE: 100 MEGOHMS INITIAL

CONTACT RESISTANCE: 10 MILLIOHMS MAX. INITIAL

DECK	CONTACTS		POSITION	
			TRIP	RESET
1	11	13		
	12	18		
	15	17		
	16	14		
2	21	23		
	22	28		
	25	27		
	26	24		
3	31	33		
	32	38		
	35	37		
	36	34		
4	41	43		
	42	48		
	45	47		
	46	44		
5	51	53		
	52	58		
	55	57		
	56	54		



DESCRIPTION

7606D 125VDCCXX

REV. -



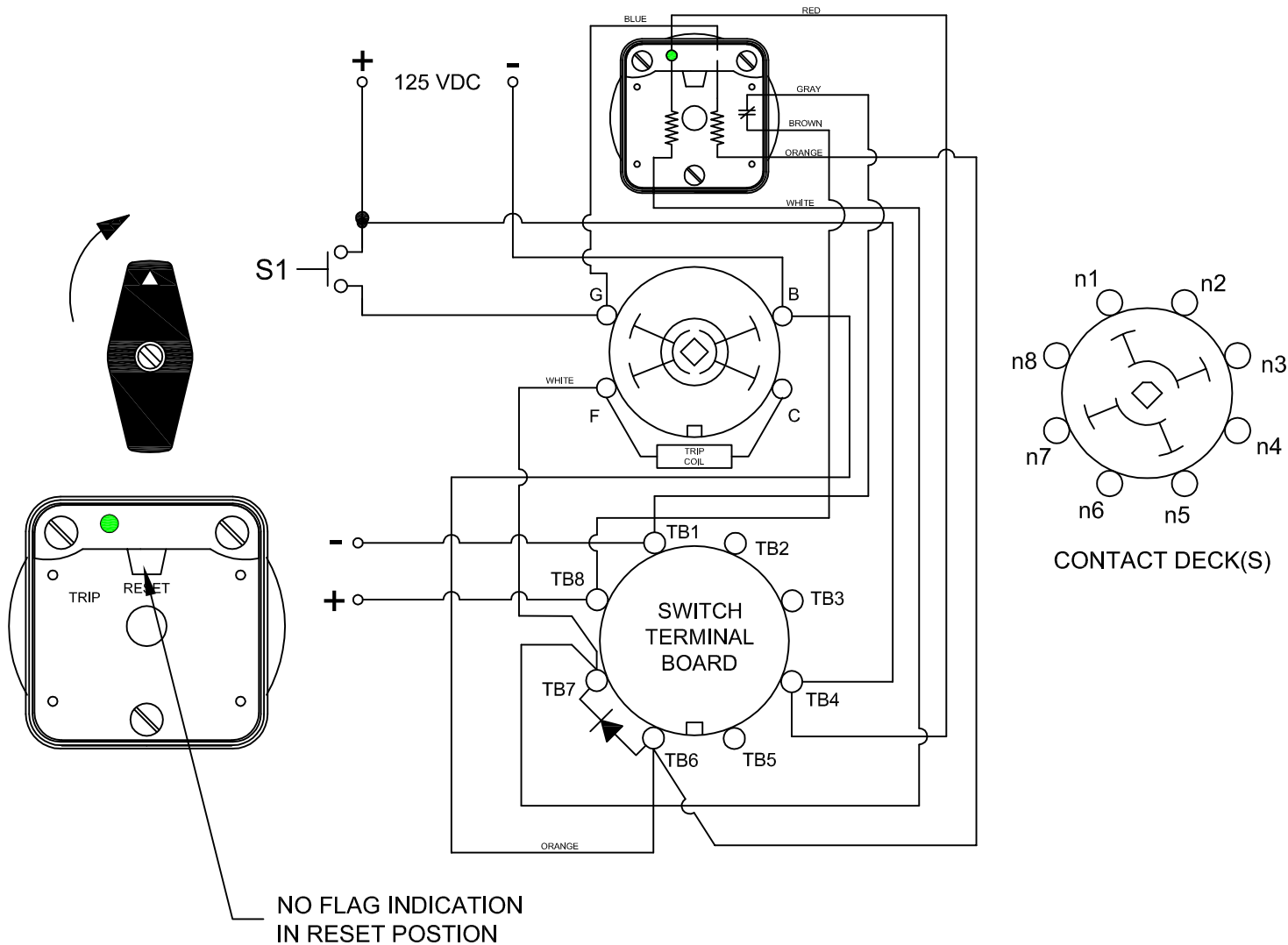
LOCK-OUT RELAYS (LOR)

GENERAL OPERATION:

THE HANDLE OF THE LOR MUST BE MANUALLY ROTATED CLOCKWISE TO PLACE THE UNIT IN THE "RESET" POSITION (SEE FIGURE A)

CONDITION #1		RESULT	
ROTOR	RESET (AS SHOWN)	LEFT LED	ON
SWITCH 1 (S1)	OPEN		
		TCM CIRCUIT (TRIP COIL MONITOR)	OPEN

FIGURE A - RESET POSITION

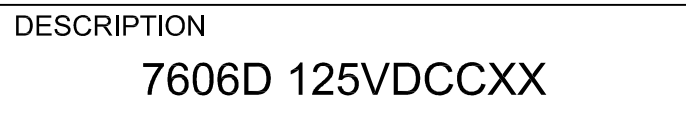


DESCRIPTION

7606D 125VDCCXX

RESULT	
LEFT LED	OFF
TCM SWITCH	CLOSED

FIGURE B - TRIP POSITION



CONDITION #2		RESULT	
ROTOR	TRIP (AS SHOWN)	LEFT LED	OFF
SWITCH 1 (S1)	OPEN	TCM SWITCH	CLOSED

WHEN S1 OPENS, LOR REMAINS IN THE "TRIP" POSITION AND SCADA REMAINS CLOSED UNTIL MANUALLY ROTATED TO THE RESET POSITION

FIGURE B - TRIP POSITION

