

SPECIFICATIONS:

NO. OF POSITIONS: 2, TRIP AND RESET
 NO. OF SECTIONS: 7 (5 ACTIVE, 1 CONTROL, 1 TERM. BRD DECK)
 CONTACTS: 2 NORMALLY OPEN
 2 NORMALLY CLOSED
 PER DECK
 ACTION: 45° POSITIVE TRIP DETENT
 STATIONARY CONTACTS : SILVER OVER COPPER
 NAMEPLATE: AS SHOWN

OIL SPECIFICATIONS:

OPERATING VOLTAGE: 125 VDC
 THRESHOLD VOLTAGE: 23 VDC
 OPERATING RANGE: 45 - 140 VDC
 CURRENT AT RATED VOLTAGE: 2.5 A

ELECTRICAL RATINGS:

25 A/120 VAC 3 A/ 125 VDC
 15 A/240 VAC 1 A/ 250 VDC
 6 A/600 VAC

OVERLOAD CURRENT (50 OPERATIONS):

95 A/120 VAC
 65 A/240 VAC
 35 A/600 VAC

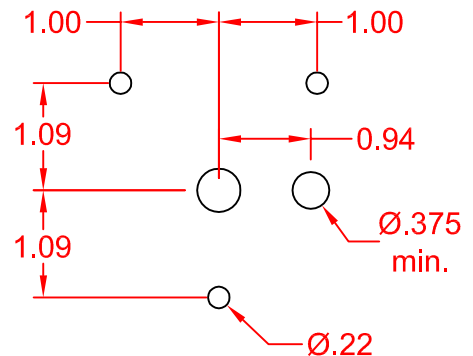
DIELECTRIC STRENGTH: 2200 VRMS

INSULATION RESISTANCE: 100 MEGOHMS INITIAL

CONTACT RESISTANCE: 10 MILLIOHMS MAX. INITIAL

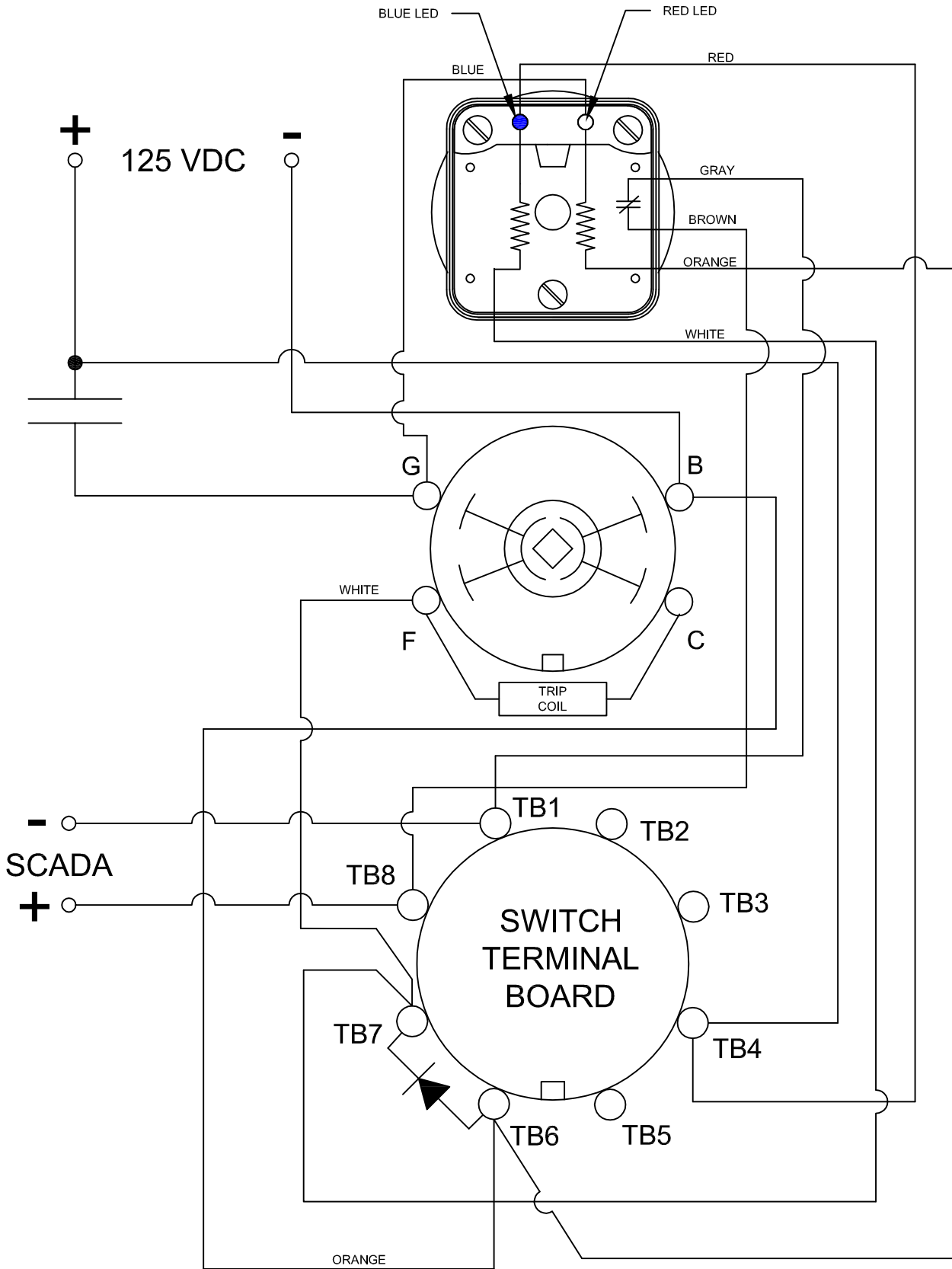
DECK	CONTACTS	POSITION	
		TRIP	RESET
1	11 — — 13		X
	12 — — 18	X	
	15 — — 17		X
	16 — — 14	X	
2	21 — — 23		X
	22 — — 28	X	
	25 — — 27		X
3	26 — — 24	X	
	31 — — 33		X
	32 — — 38	X	
4	35 — — 37		X
	36 — — 34	X	
	41 — — 43		X
5	42 — — 48	X	
	45 — — 47		X
	46 — — 44	X	
5	51 — — 53		X
	52 — — 58	X	
	55 — — 57		X
5	56 — — 54	X	

DRILLING (PANEL) DIMENSIONS



DESCRIPTION

7605E 125VDCEXA



DESCRIPTION

7605E 125VDCEXA

LOCK-OUT RELAYS (LOR)

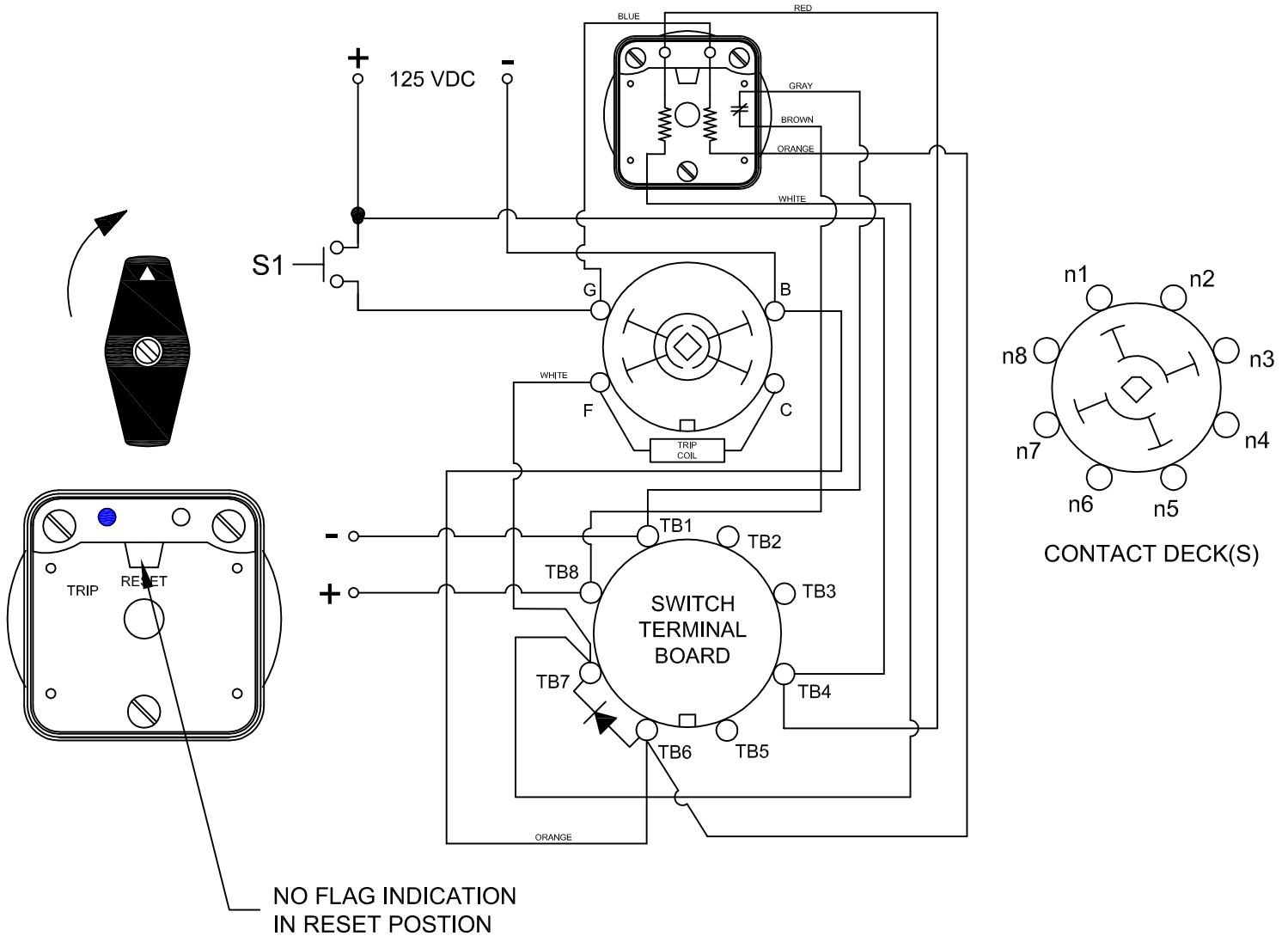
GENERAL OPERATION:

THE HANDLE OF THE LOR MUST BE MANUALLY ROTATED CLOCKWISE TO PLACE THE UNIT IN THE "RESET" POSITION (SEE FIGURE A)

CONDITION #1	
ROTOR	RESET (AS SHOWN)
SWITCH 1 (S1)	OPEN

RESULT	
LEFT LED	ON
RIGHT LED	OFF
SCADA CIRCUIT (TRIP COIL MONITOR)	OPEN

FIGURE A - RESET POSITION



DESCRIPTION

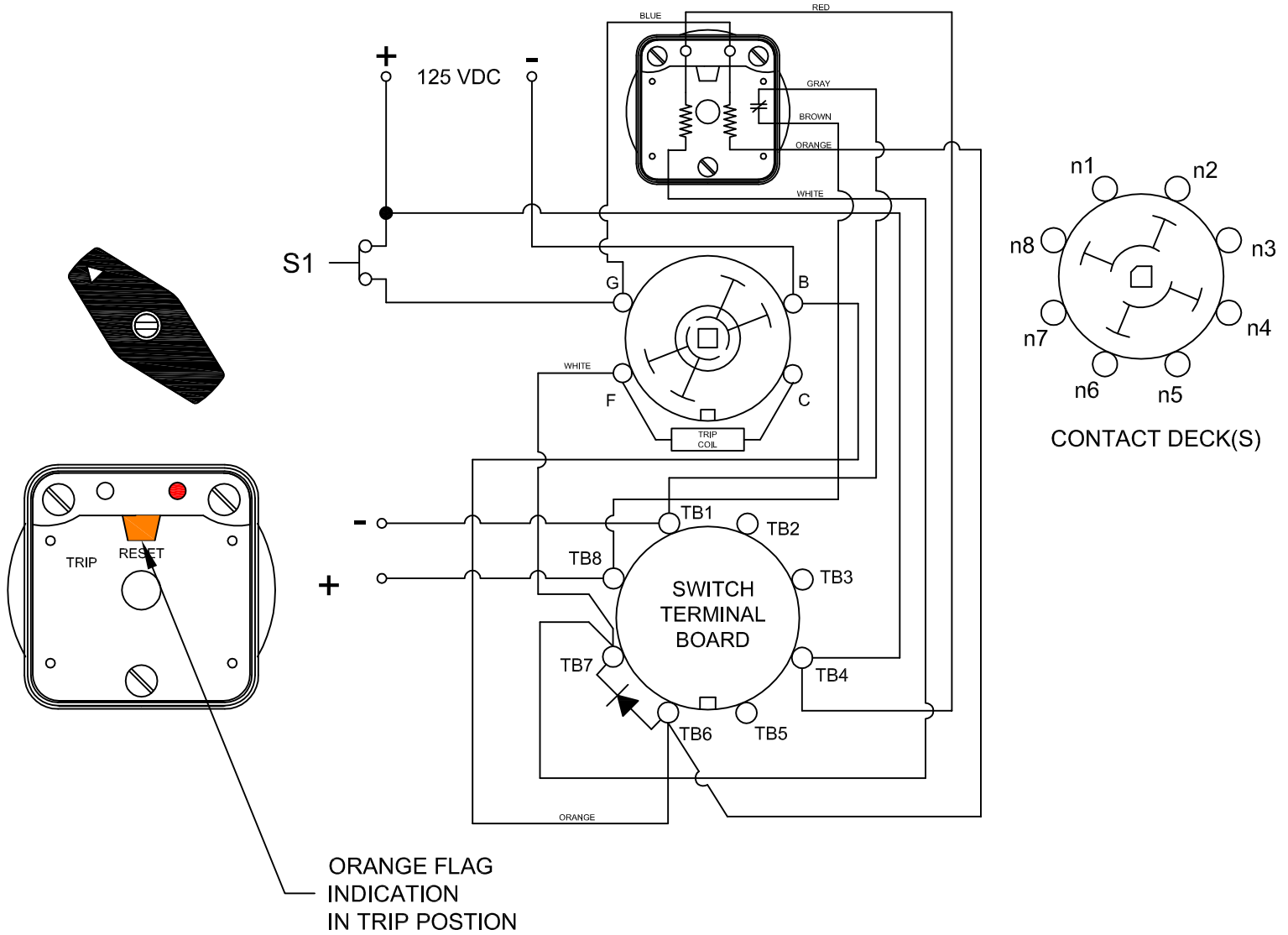
7605E 125VDCEXA

CONDITION #2	
ROTOR	RESET (AS SHOWN)
SWITCH 1 (S1)	CLOSED

RESULT	
LEFT LED	OFF
RIGHT LED	ON
SCADA SWITCH	CLOSED

WHEN S1 CLOSES, THE COIL CAUSES A MECHANICAL ROTATION OF THE RELAY RESULTING IN THE SWITCH ROTOR ADVANCE TO THE "TRIP" POSITION SHOWN

FIGURE B - TRIP POSITION



ORANGE FLAG INDICATION IN TRIP POSITION

DESCRIPTION

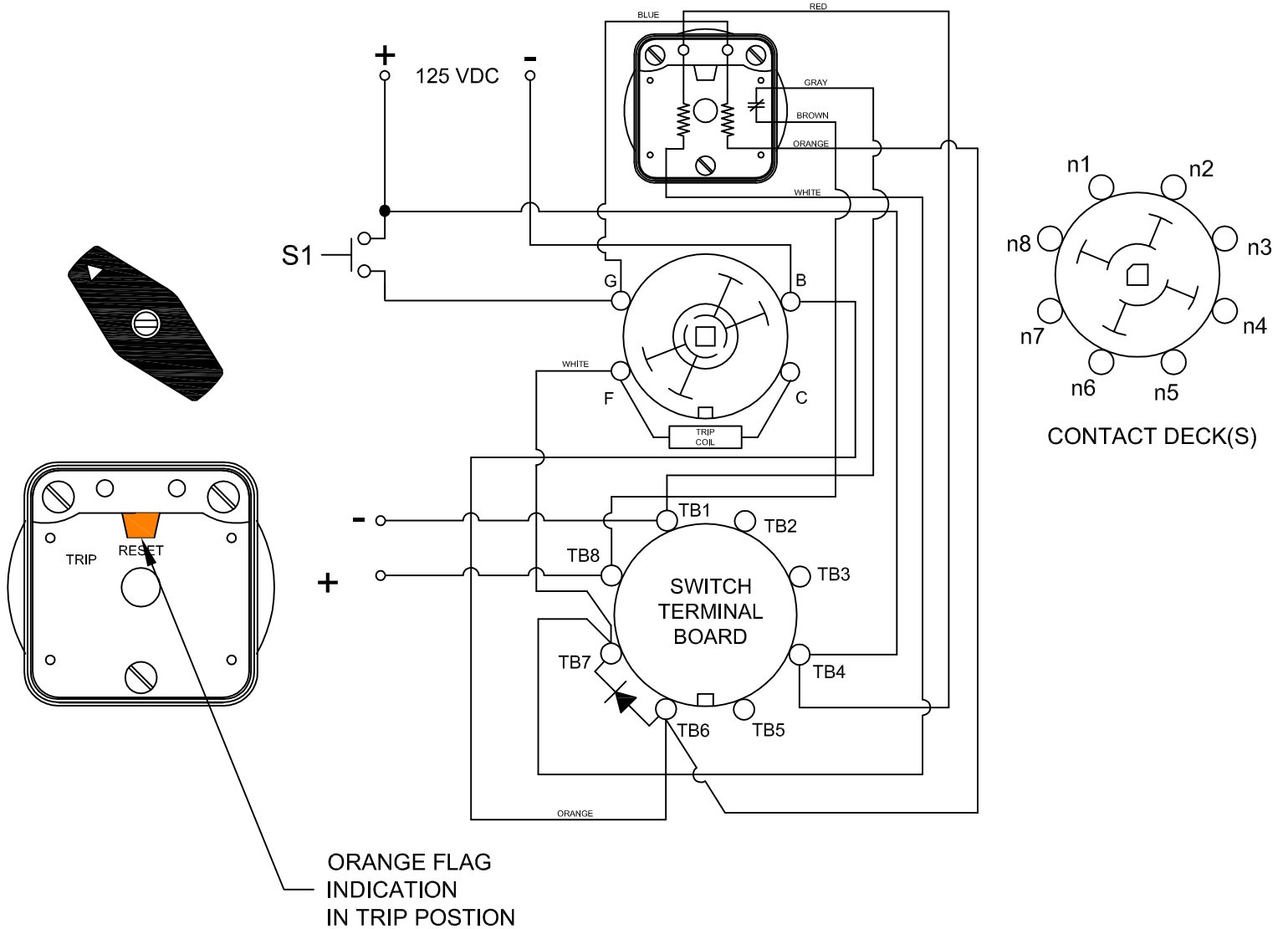
7605E 125VDCEXA

CONDITION #2	
ROTOR	RESET (AS SHOWN)
SWITCH 1 (S1)	OPEN

RESULT	
LEFT LED	OFF
RIGHT LED	OFF
SCADA SWITCH	CLOSED

WHEN S1 OPENS, THE RIGHT LED WILL TURN OFF THE SCADA CIRCUIT WILL REMAIN CLOSED UNTIL THE LOR IS ROTATED BACK TO THE RESET POSITION.

FIGURE B - TRIP POSITION



DESCRIPTION
7605E 125VDCEXA
308 COMPONENTS DRIVE SMITHFIELD, NC 27577 USA