

**SPECIFICATIONS:**

NO. OF POSITIONS: 2, TRIP AND RESET  
 NO. OF SECTIONS: 7 (5 ACTIVE, 1 CONTROL, 1 TERM. BRD DECK)

CONTACTS: 2 NORMALLY OPEN  
 2 NORMALLY CLOSED  
 PER DECK

ACTION: 45° POSITIVE TRIP DETENT  
 STATIONARY CONTACTS : SILVER OVER COPPER  
 NAMEPLATE: AS SHOWN

**COIL SPECIFICATIONS:**

OPERATING VOLTAGE: 125 VDC / 120 VAC  
 THRESHOLD VOLTAGE: 16 VDC / 20 VAC  
 OPERATING RANGE: 30 - 140 VDC / 30 - 140 VAC  
 CURRENT AT RATED VOLTAGE: 4.6 / 4.4 AMPS

**ELECTRICAL RATINGS:**

25 A/120 VAC 3 A/ 125 VDC  
 15 A/240 VAC 1 A/ 250 VDC  
 6 A/600 VAC

**OVERLOAD CURRENT (50 OPERATIONS):**

95 A/120 VAC  
 65 A/240 VAC  
 35 A/600 VAC

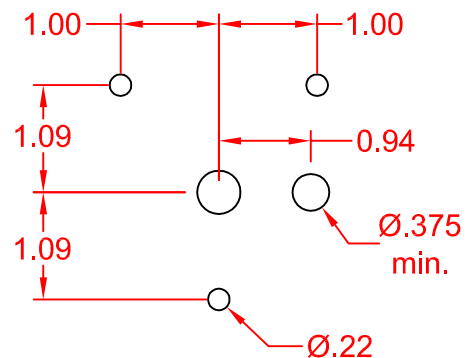
DIELECTRIC STRENGTH: 2200 VRMS

INSULATION RESISTANCE: 100 MEGOHMS INITIAL

CONTACT RESISTANCE: 10 MILLIOHMS MAX. INITIAL

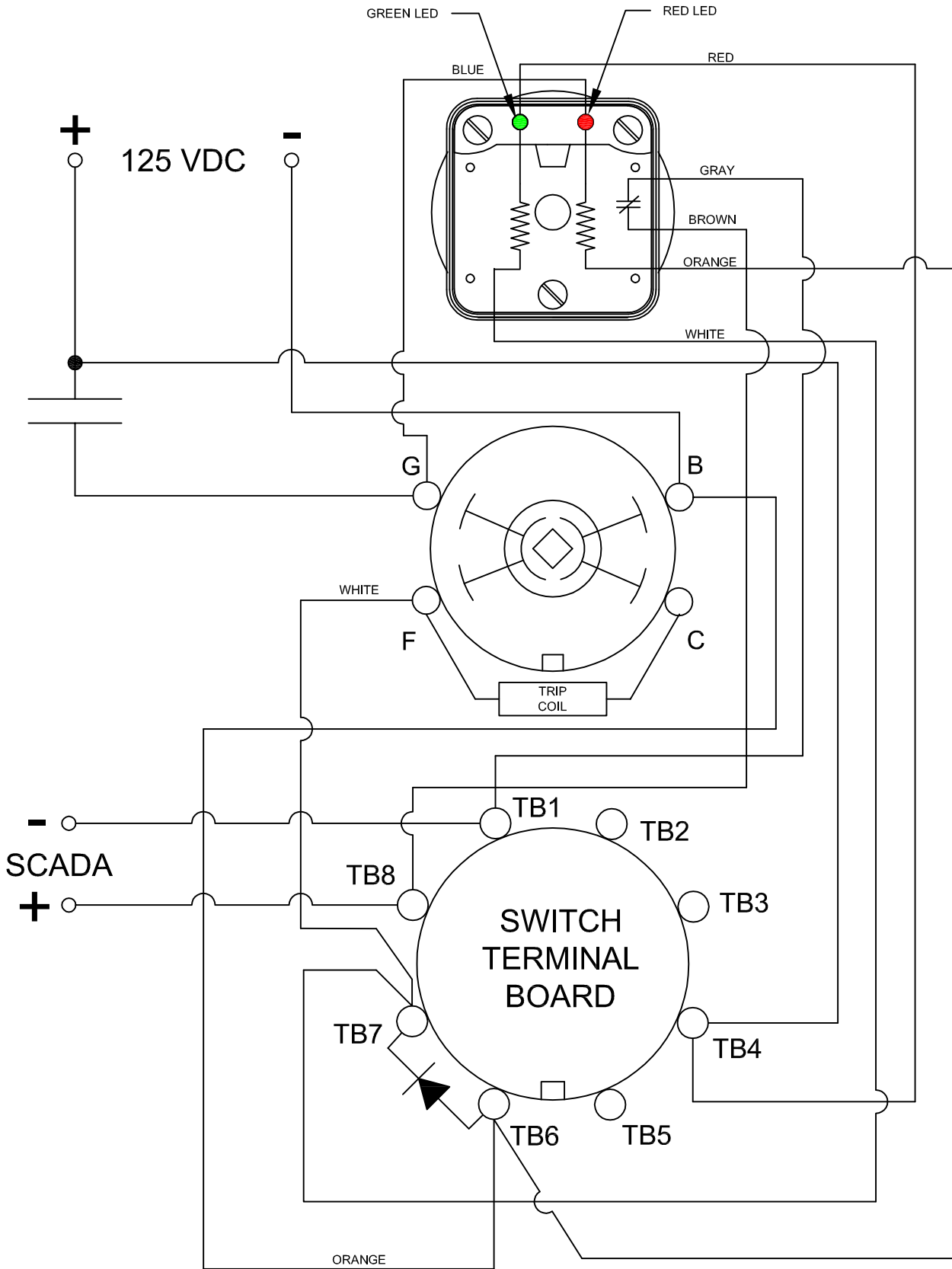
DECK	CONTACTS	POSITION	
		TRIP	RESET
1	11 —  — 13		X
	12 —  — 18	X	
	15 —  — 17		X
	16 —  — 14	X	
2	21 —  — 23		X
	22 —  — 28	X	
	25 —  — 27		X
3	26 —  — 24	X	
	31 —  — 33		X
	32 —  — 38	X	
4	35 —  — 37		X
	36 —  — 34	X	
	41 —  — 43		X
5	42 —  — 48	X	
	45 —  — 47		X
	46 —  — 44	X	
5	51 —  — 53		X
	52 —  — 58	X	
	55 —  — 57		X
5	56 —  — 54	X	

**DRILLING (PANEL) DIMENSIONS**



**DESCRIPTION**

7605D 125VDCCXA



DESCRIPTION

7605D 125VDCCXA

## LOCK-OUT RELAYS (LOR)

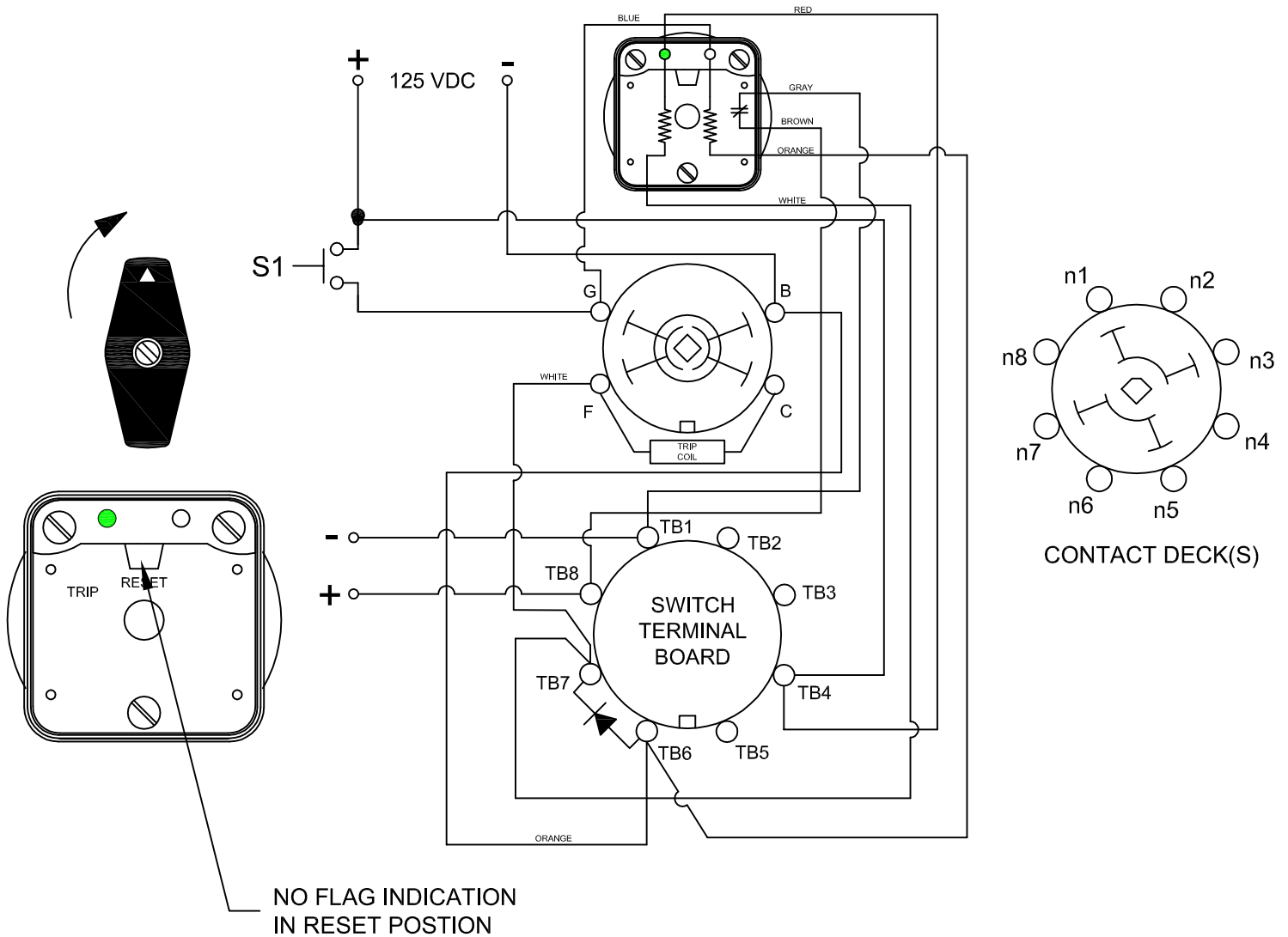
### GENERAL OPERATION:

THE HANDLE OF THE LOR MUST BE MANUALLY ROTATED CLOCKWISE TO PLACE THE UNIT IN THE "RESET" POSITION (SEE FIGURE A)

CONDITION #1	
ROTOR	RESET (AS SHOWN)
SWITCH 1 (S1)	OPEN

RESULT	
LEFT LED	ON
RIGHT LED	OFF
SCADA CIRCUIT TRIP COIL MONITOR)	OPEN

FIGURE A - RESET POSITION



### DESCRIPTION

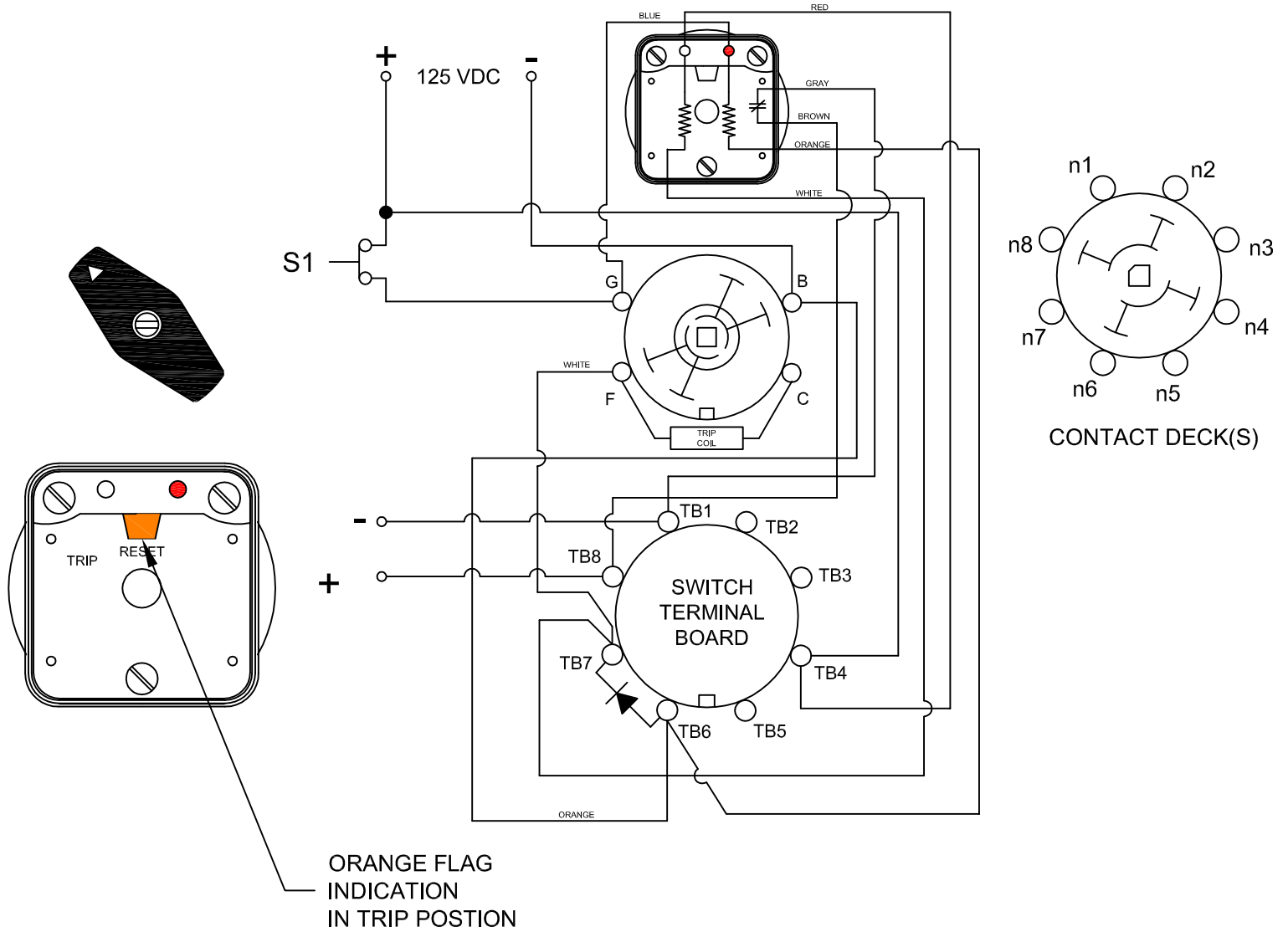
7605D 125VDCCXA

CONDITION #2	
ROTOR	RESET (AS SHOWN)
SWITCH 1 (S1)	CLOSED

RESULT	
LEFT LED	OFF
RIGHT LED	ON
SCADA SWITCH	CLOSED

WHEN S1 CLOSES, THE COIL CAUSES A MECHANICAL ROTATION OF THE RELAY RESULTING IN THE SWITCH ROTOR ADVANCE TO THE "TRIP" POSITION SHOWN

FIGURE B - TRIP POSITION



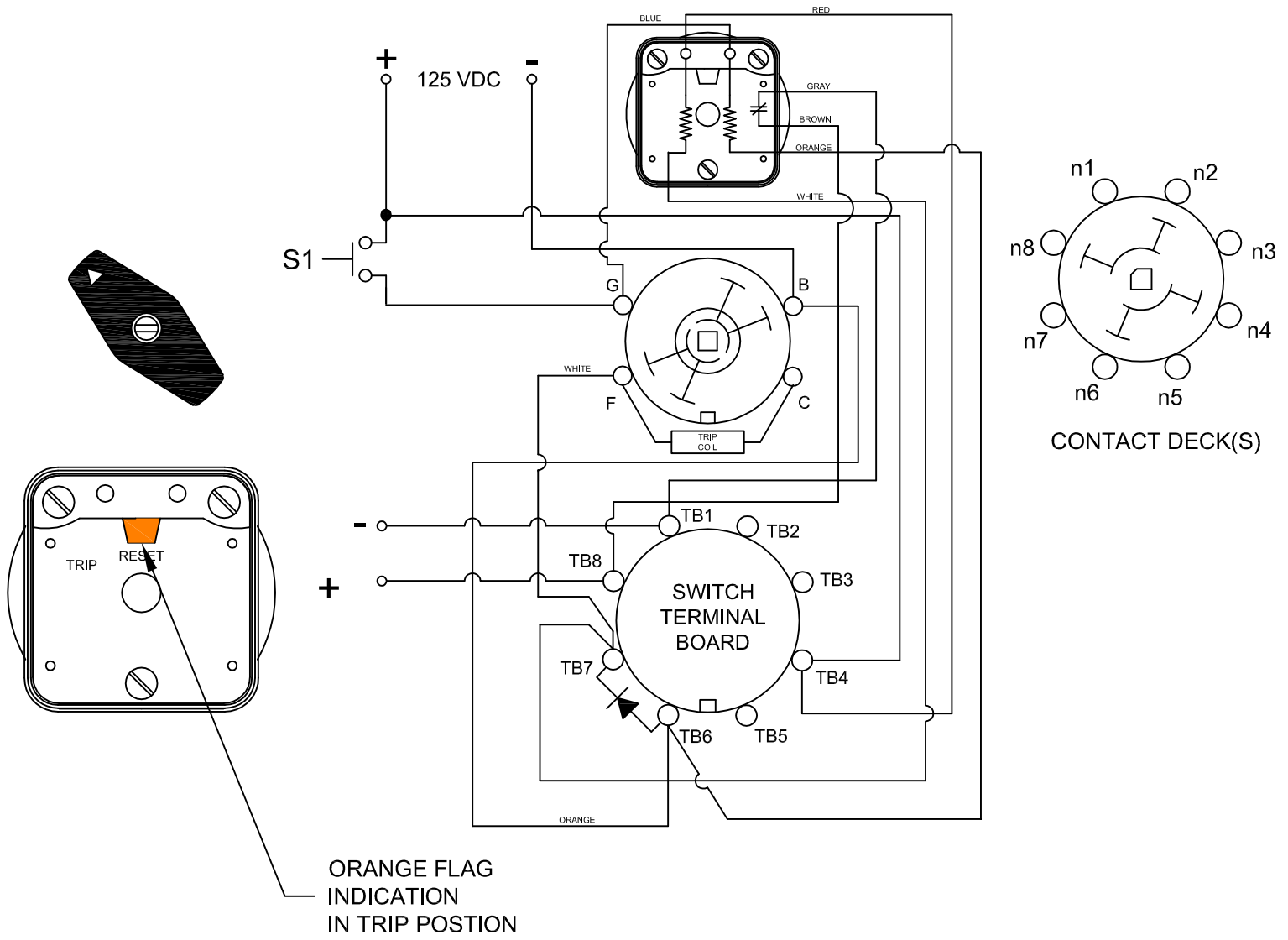
DESCRIPTION
7605D 125VDCCXA
308 COMPONENTS DRIVE SMITHFIELD, NC 27577 USA

CONDITION #2	
ROTOR	RESET (AS SHOWN)
SWITCH 1 (S1)	OPEN

RESULT	
LEFT LED	OFF
RIGHT LED	OFF
SCADA SWITCH	CLOSED

WHEN S1 OPENS, THE RIGHT LED WILL TURN OFF THE SCADA CIRCUIT WILL REMAIN CLOSED UNTIL THE LOR IS ROTATED BACK TO THE RESET POSITION.

FIGURE B - TRIP POSITION



DESCRIPTION
7605D 125VDCCXA
308 COMPONENTS DRIVE SMITHFIELD, NC 27577 USA