

**SPECIFICATIONS:**

NO. OF POSITIONS: 2, TRIP AND RESET  
 NO. OF SECTIONS: 1  
 CONTACTS: 2 NORMALLY OPEN  
           2 NORMALLY CLOSED  
           PER DECK  
 ACTION: 45° POSITIVE TRIP DETENT  
 STATIONARY CONTACTS : SILVER OVER COPPER  
 NAMEPLATE: AS SHOWN

**COIL SPECIFICATIONS:**

OPERATING VOLTAGE: 125 VDC / 120 VAC  
 THRESHOLD VOLTAGE: 16 VDC / 20 VAC  
 OPERATING RANGE: 30 - 140 VDC / 30 - 140 VAC  
 CURRENT AT RATED VOLTAGE: 4.6 / 4.4 AMPS

**ELECTRICAL RATINGS:**

25 A/120 VAC    3 A/ 125 VDC  
 15 A/600 VAC   1 A/ 250 VDC  
 20 A/600 VAC (RESISTIVE)



**OVERLOAD CURRENT (50 OPERATIONS):**

95 A/120 VAC  
 65 A/240 VAC  
 35 A/600 VAC

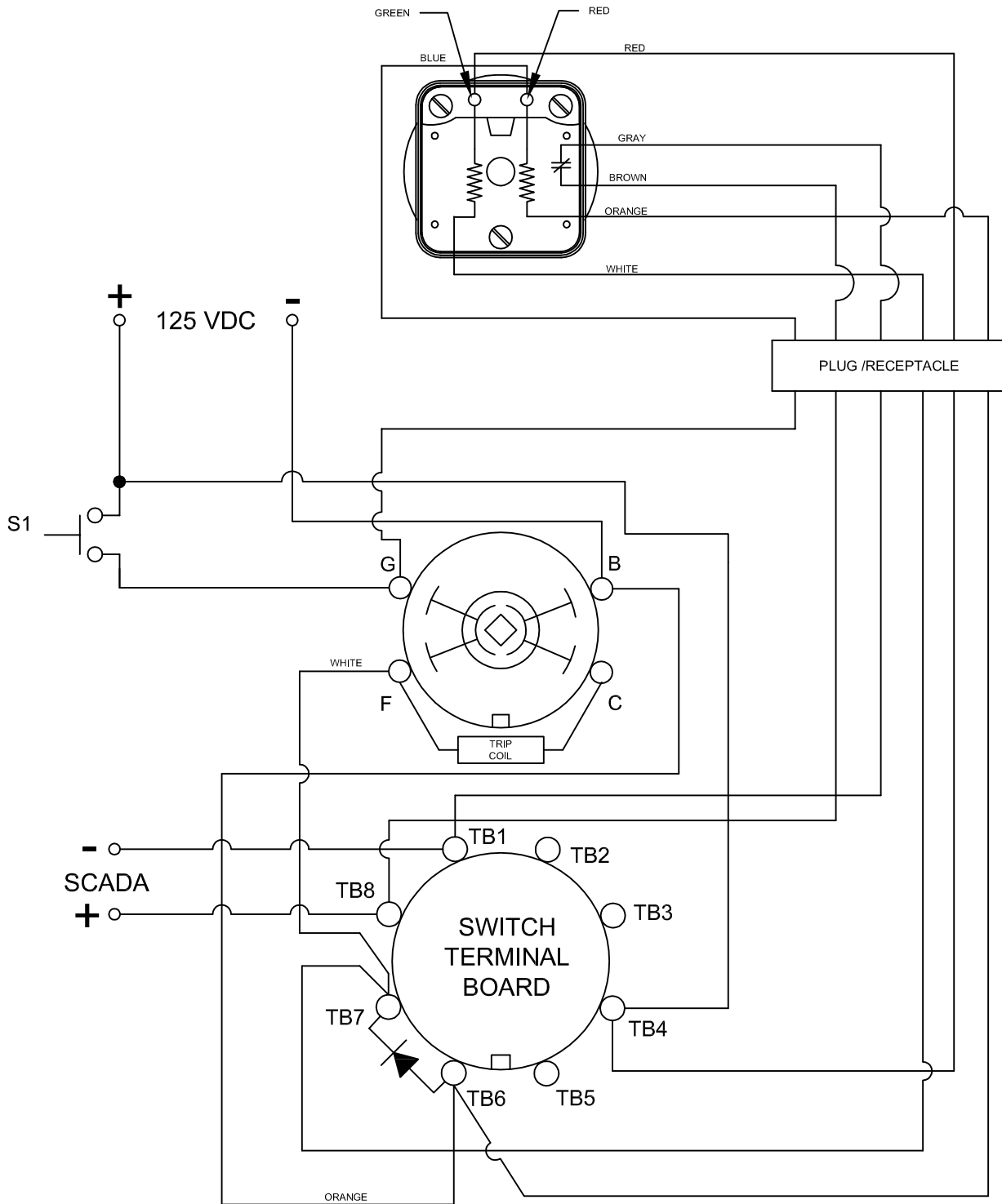
DIELECTRIC STRENGTH: 2200 VRMS

INSULATION RESISTANCE: 100 MEGOHMS INITIAL

CONTACT RESISTANCE: 10 MILLIOHMS MAX. INITIAL

DECK	CONTACTS	POSITION	
		TRIP	RESET
1	11 —  —   — 13		X
	12 —  —   — 18	X	
	15 —  —   — 17		X
	16 —  —   — 14	X	

<p>DESCRIPTION</p> <p style="text-align: center;"><b>LOCK-OUT RELAY SPECIFICATION SHEET</b></p>	<p>PART NUMBER</p> <p style="text-align: center;"><b>7601D 125VDCCXAWP</b></p>
<p> AN ISO 9001 COMPANY</p>	
<p>308 COMPONENTS DRIVE SMITHFIELD, NC 27577 USA</p>	
<p>PAGE 1 OF 5</p>	



DESCRIPTION

LOCK-OUT RELAY SPECIFICATION SHEET

PART NUMBER

7601D 125VDCCXAWP

LOCK-OUT RELAYS (LOR)

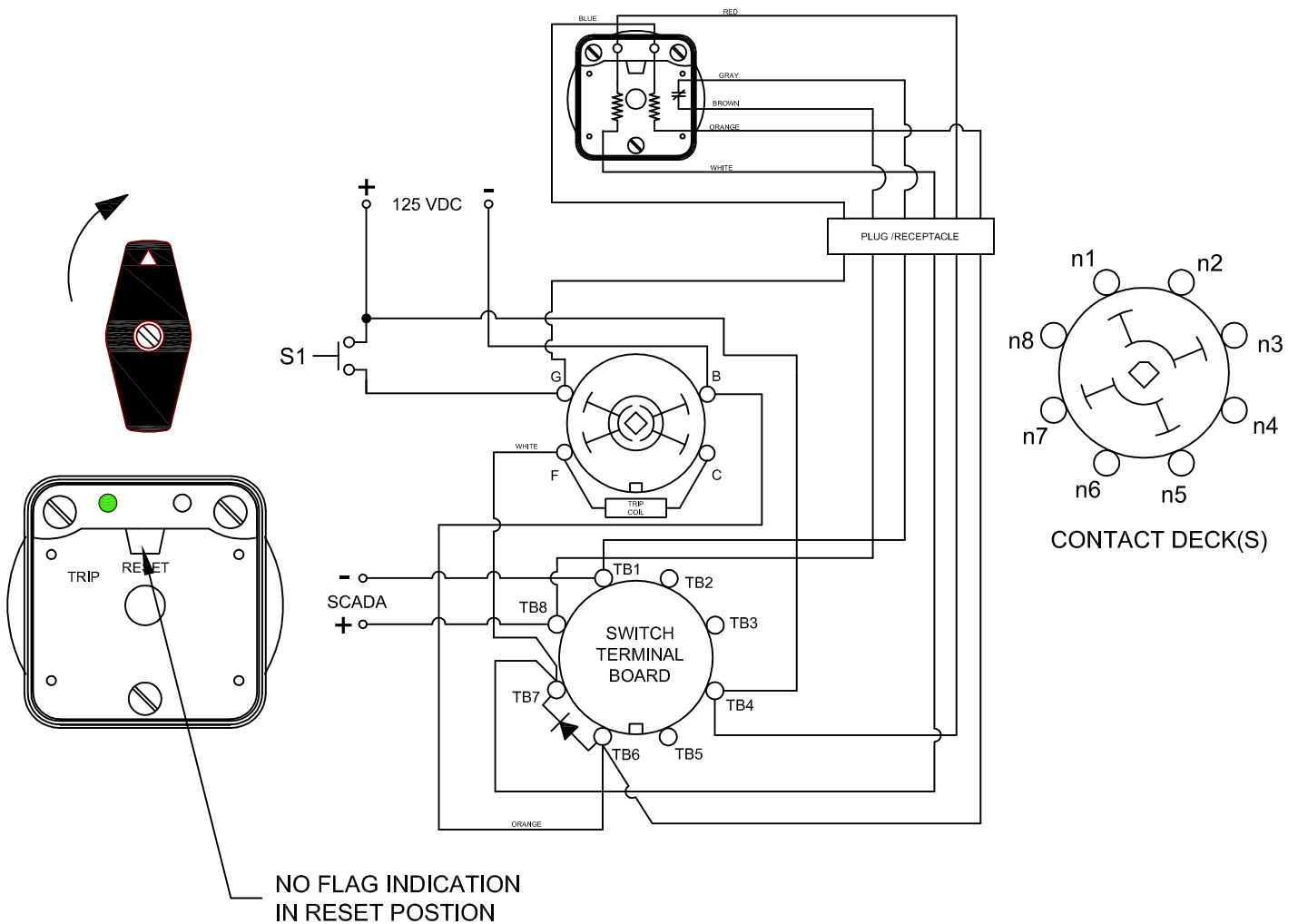
GENERAL OPERATION:

THE HANDLE OF THE LOR MUST BE MANUALLY ROTATED CLOCKWISE TO PLACE THE UNIT IN THE "RESET" POSITION (SEE FIGURE A)

CONDITION #1	
ROTOR	RESET (AS SHOWN)
SWITCH 1 (S1)	OPEN

RESULT	
LEFT LED	ON
RIGHT LED	OFF
SCADA CIRCUIT TRIP COIL MONITOR)	OPEN

FIGURE A - RESET POSITION



DESCRIPTION

LOCK-OUT RELAY SPECIFICATION SHEET

PART NUMBER

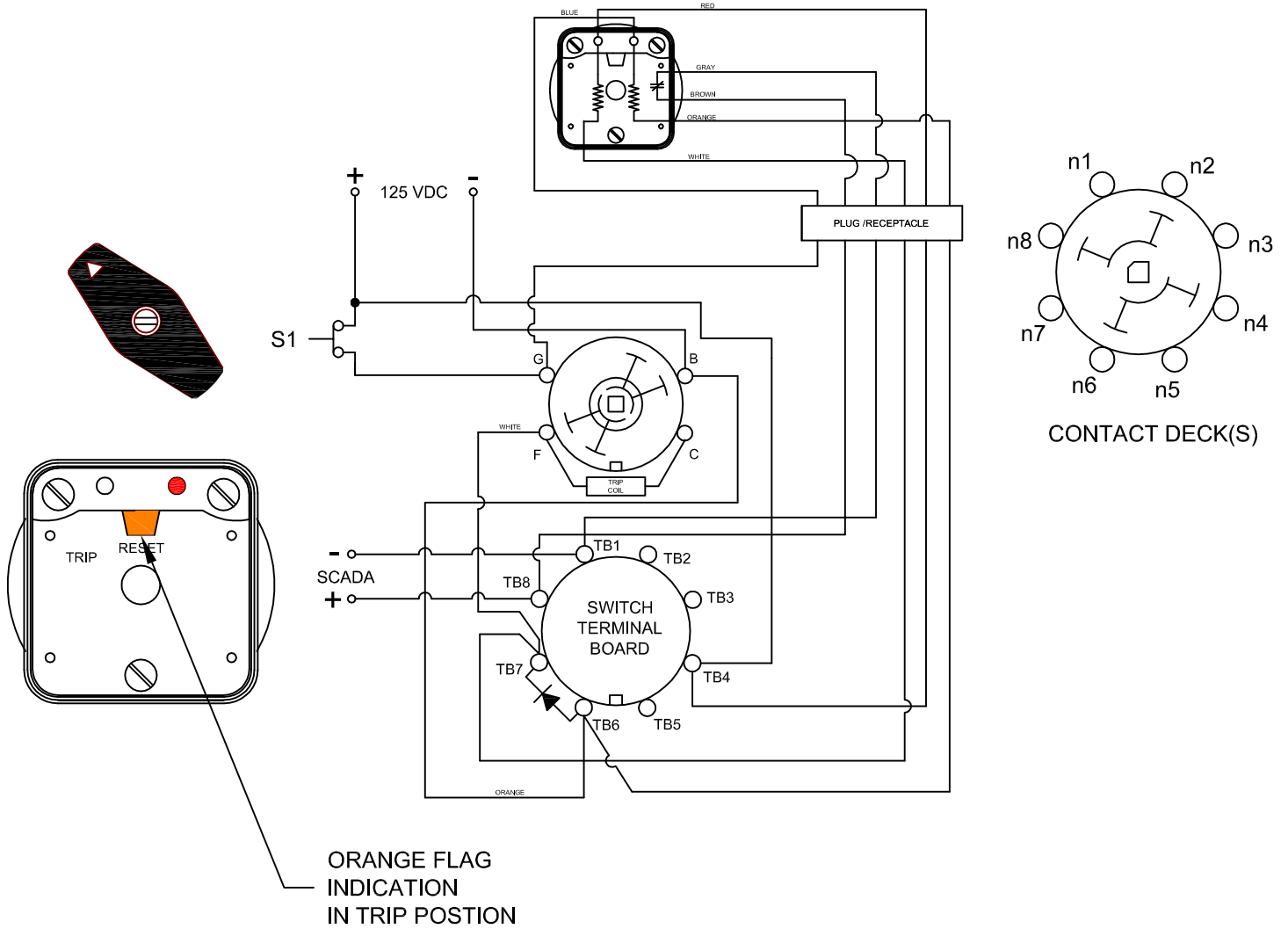
7601D 125VDCCXAWP

CONDITION #2	
ROTOR	RESET (AS SHOWN)
SWITCH 1 (S1)	CLOSED

RESULT	
LEFT LED	OFF
RIGHT LED	ON
SCADA SWITCH	CLOSED

WHEN S1 CLOSES, THE COIL CAUSES A MECHANICAL ROTATION OF THE RELAY RESULTING IN THE SWITCH ROTOR ADVANCE TO THE "TRIP" POSITION SHOWN

FIGURE B - TRIP POSITION  
FIGURE A - RESET POSITION



DESCRIPTION

LOCK-OUT RELAY SPECIFICATION SHEET

PART NUMBER

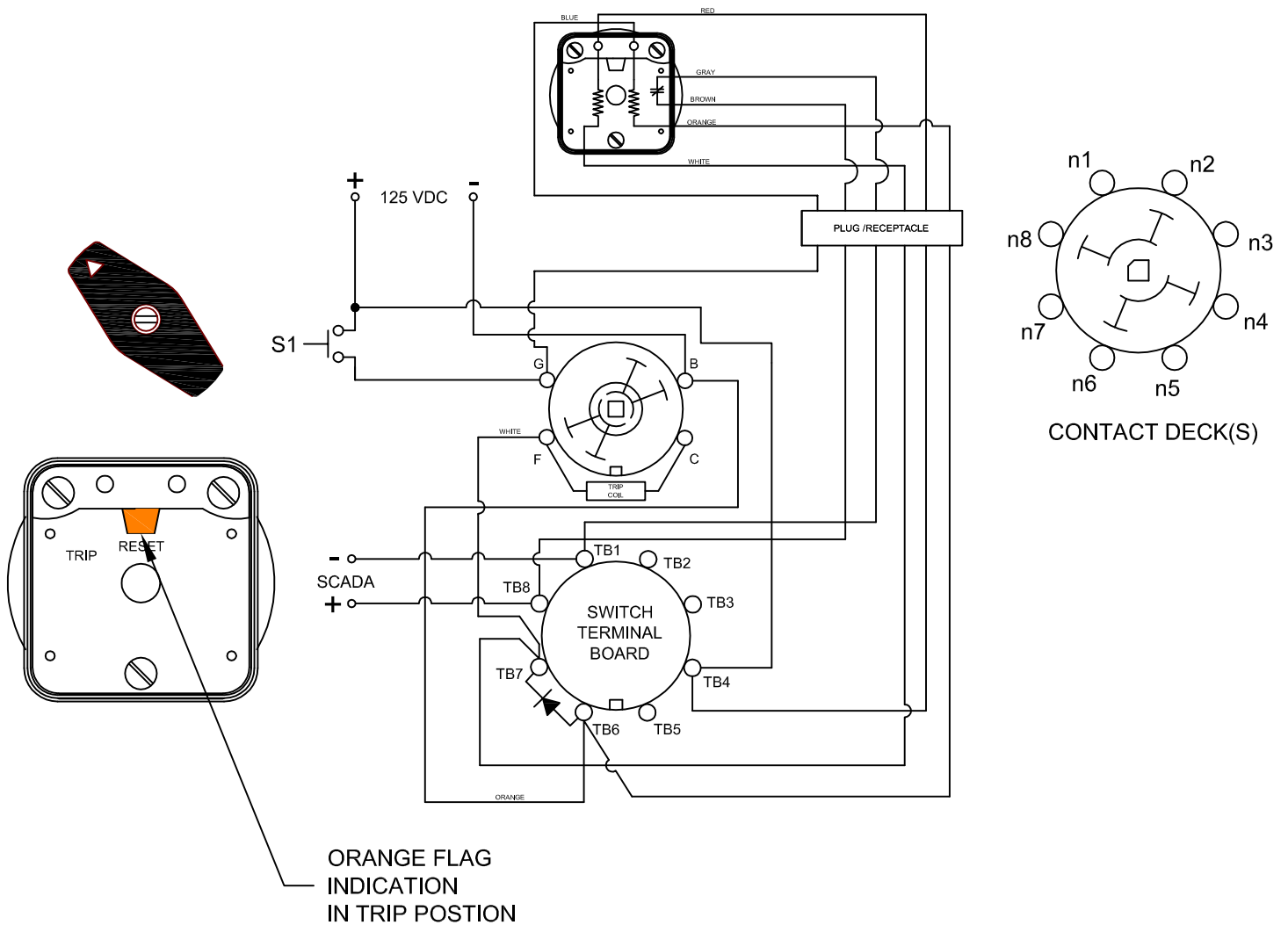
7601D 125VDCCXAWP

CONDITION #2	
ROTOR	RESET (AS SHOWN)
SWITCH 1 (S1)	OPEN

RESULT	
LEFT LED	OFF
RIGHT LED	OFF
SCADA SWITCH	CLOSED

WHEN S1 REOPENS, THE RIGHT LED GOES OFF. THE SCADA CIRCUIT REMAINS CLOSED UNTIL THE SHAFT IS ROTATED BACK TO THE RESET POSITION.

FIGURE B - TRIP POSITION  
FIGURE A - RESET POSITION



DESCRIPTION

LOCK-OUT RELAY SPECIFICATION SHEET

PART NUMBER

7601D 125VDCCXAWP