

SHALLCO SERIES 26

Part Number: 2603C

VOLTMETER TRANSFER SWITCH

3-phase, phase-to-neutral

Double pole, triple throw

General:

Meets requirements for 1 - 25 ampere switching of resistive loads to .75 power factor at voltages to 600 V AC and 250 V DC resistive loads

Electrical:

- * Ratings: 25A/120 VAC
- 15A/600 VAC
- 20A/600 VAC (RESISTIVE)
- 3A/125 VDC
- 1A/250 VDC



- * Current carrying capacity: 25 amperes
- * Dielectric Withstanding Voltage: 2200 Vrms
- * Contact Resistance: Initial, 10 milliohms max.
- * Insulation Resistance: 100 Megohms min., initial

Mechanical:

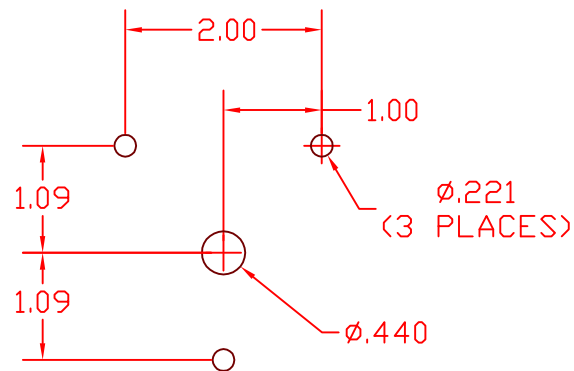
- * Sections: 2
- * Positions: 4 See Schematic Diagram
- * Indexing: 45°
- * Rotational Life: 65,000 operations

Materials and Finishes:

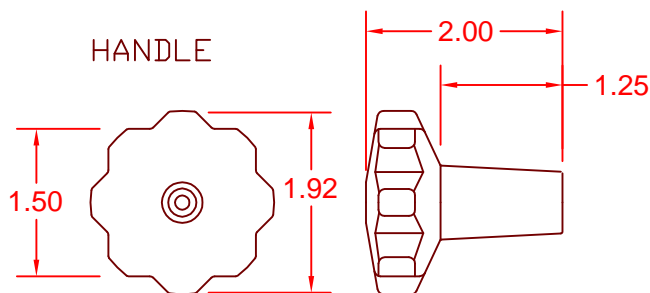
- * Rotors and Stators: Thermoset Plastic, UL 94VO
- * Rotor contacts: Phosphor bronze
- * Stator contacts: Silver plated copper, screw type
- * Terminal hardware: silver plated brass
- * Exterior Metal: Steel with zinc chromate finish
- * Knob: thermoset phenolic



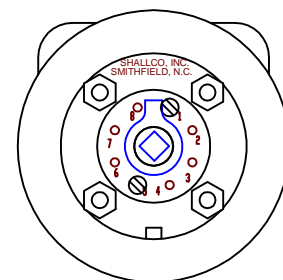
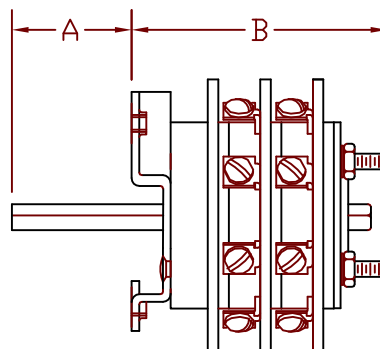
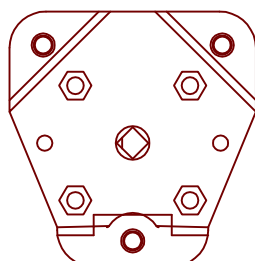
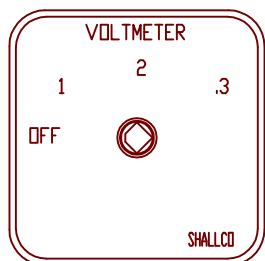
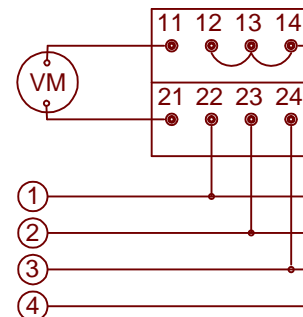
308 COMPONENTS DRIVE
SMITHFIELD, NC 27577 USA



MOUNTING HOLE DETAIL



DECK	CONTACTS	OFF	POS.		
			1	2	3
1	11-O				
	I-O12	X			
	I-O13		X		
2	I-O14				X
	21-O				
	I-O22	X			
2	I-O23		X		
	I-O24				X



2603C

REV. -

HANDLE TYPE: KNURLED "A" DIM: 1.6

"B" DIM: 2.9



308 COMPONENTS DRIVE
SMITHFIELD, NC 27577 USA