

SHALLCO SERIES 26



Part Number: 26202BS

General:

Meets requirements for 1 - 25 ampere switching of resistive loads to .75 power factor at voltages to 600 V AC and 250 V DC resistive loads

Electrical:

* Ratings



25A/125 VAC

15A/600 VAC



20A/600 VAC (RES)

15A/600VAC

3A/125 VDC

1A/250 VDC

- * Current carrying capacity: 30 amperes
- * Dielectric Withstanding Voltage: 2200 Vrms
- * Contact Resistance: Initial, 10 milliohms max.
- * Insulation Resistance: 100 Megohms min., initial

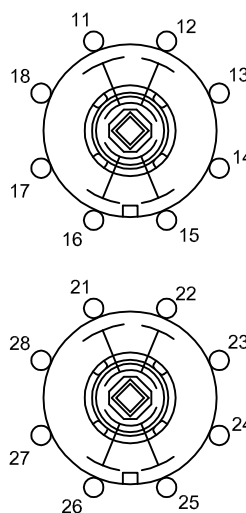
Mechanical:

- * Sections: 2
- * Positions: Adjustable (See Contact Table and Operation)
- * Operation: Shorting (make before break)
- * Indexing: 45°
- * Rotational Life: 65,000 operations
- * Handle: Oval

Materials and Finishes:

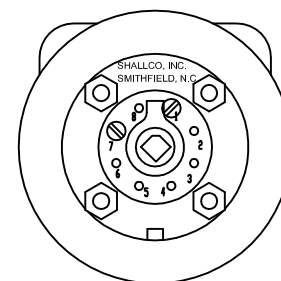
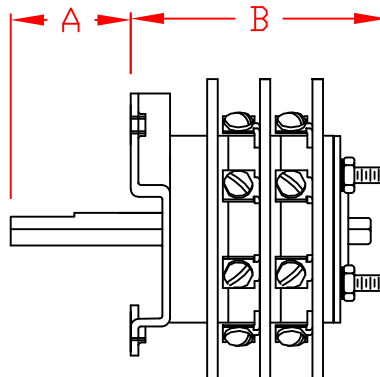
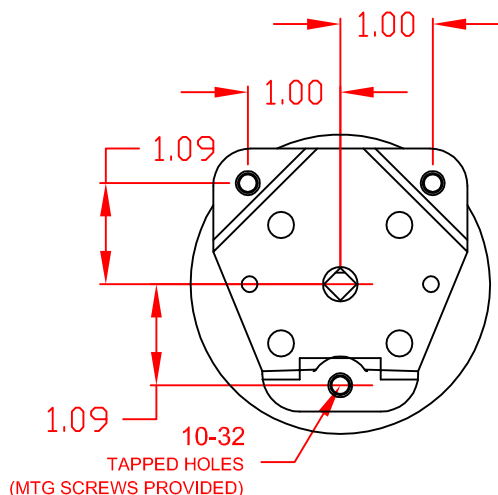
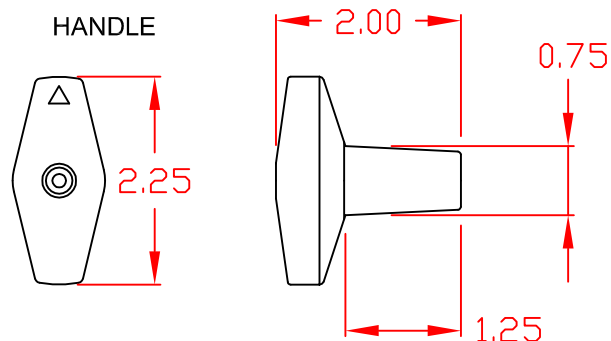
- * Rotors and Stators: Thermoset Plastic, UL 94VO
- * Rotor contacts: Phosphor bronze
- * Stator contacts: Silver plated copper, screw type
- * Terminal hardware: silver plated brass
- * Exterior Metal: Steel with zinc chromate finish

CONTACT TABLE



DECK	CONTACTS	POSITION							
		1	2	3	4	5	6	7	8
1	11								
	12	X							
	13		X						
	14			X					
	15	X			X				
	16		X			X			
	17			X			X		
	18	X			X			X	
	2	21							
22		X							
23			X						
24				X					
25		X			X				
26			X			X			
27				X			X		
28		X			X			X	

ALL CONTACT ARE MAKE BEFORE BREAK



HANDLE TYPE: B (OVAL)

"A" DIM: 1.61

"B" DIM: 2.41



308 COMPONENTS DRIVE
SMITHFIELD, NC 27577 USA

26202BS

REV.-