

SHALLCO SERIES 16 SWITCH



308 COMPONENTS DRIVE
SMITHFIELD, NC 27577 USA

PART NO: 16244C

6-wire. Two 3-phase circuits; phase-to-phase
Double-pole six-throw

NO. OF SECTIONS: 2
INDEXING: 45°
CIRCUIT: A (SEE TABLE)
TYPE ACTION: NON-SHORTING
DETENT: STANDARD
STOPS INSTALLED: NO
TERMINALS: SCREW TYPE, HARDWARE SUPPLIED
MOUNTING HARDWARE: SUPPLIED

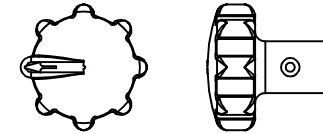
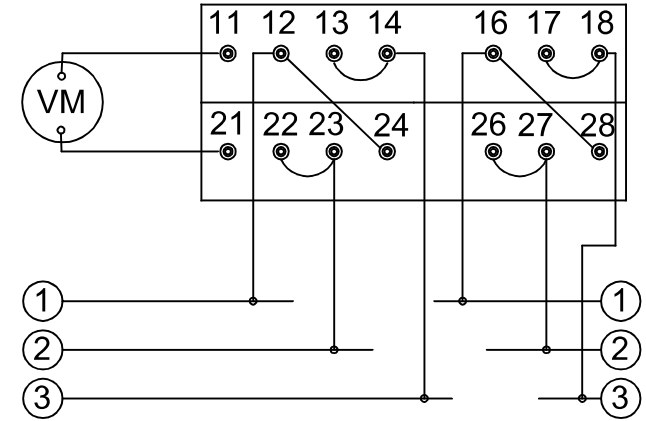
ELECTRICAL RATINGS:

- 15 A @ 125 VAC
- 5 A @ 250 VAC
- 3 A @ 600 VAC
- 5 A @ 30 VDC
- 1 A @ 125 VDC

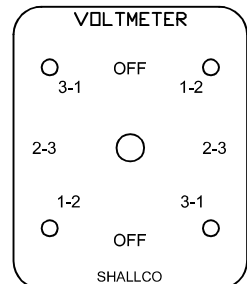


DIELECTRIC WITHSTANDING VOLTAGE: 1500 VRMS
CONTACT RESISTANCE: 10 MILLIOHMS MAX. INITIAL
INSULATION RESISTANCE: 1000 MEGHOHMS, INITIAL

DECK	CONTACTS	POSITIONS									
		OFF	1-2	2-3	3-1	OFF	1-2	2-3	3-1		
1	11-0		X								
	11-12			X							
	11-13				X						
	11-14					X					
	11-16						X				
	11-17							X			
2	21-0									X	
	21-22		X								
	21-23			X							
	21-24				X						
	21-26						X				
	21-27							X			
	21-28										X



SUPPLIED WITH
ROUND KNOB KIT



ESCUTCHEON PLATE

