

SHALLCO SERIES 16 SWITCH



PART NO: 16A1-M-2
 NO. OF SECTIONS: 2
 INDEXING: 45°
 CIRCUIT: A (SEE SCHEMATIC)
 TYPE ACTION: SHORTING
 DETENT: STANDARD
 STOPS INSTALLED: NO
 TERMINALS: SCREW TYPE, HARDWARE SUPPLIED
 PHENOLIC POINTER KNOB: SUPPLIED
 MOUNTING HARDWARE: SUPPLIED

ELECTRICAL RATINGS:

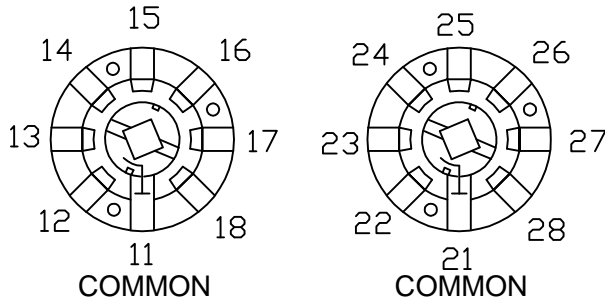
- 15 A @ 125 VAC
- 5 A @ 250 VAC
- 3 A @ 600 VAC
- 5 A @ 30 VDC
- 1 A @ 125 VDC



DECK	CONTACTS	POSITION							
		1 (OFF)	2	3	4	5	6	7	8
1	11		X						
	12			X					
	13				X				
	14					X			
	15						X		
	16							X	
	17								X
	18								
2	21		X						
	22			X					
	23				X				
	24					X			
	25						X		
	26							X	
	27								X
	28								

CONTACT TABLE

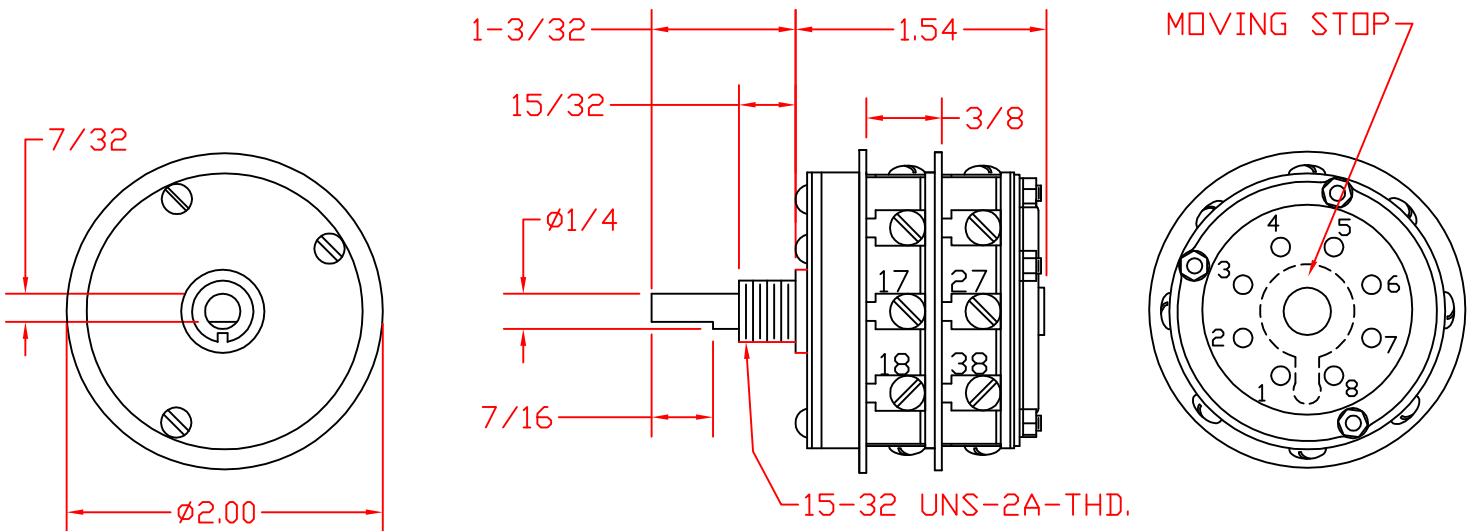
DIELECTRIC WITHSTANDING VOLTAGE: 1500 VRMS
 CONTACT RESISTANCE: 10 MILLIOHMS MAX. INITIAL
 INSULATION RESISTANCE: 1000 MEGHOHMS, INITIAL



ROTOR/STATOR DIAGRAM

CIRCUIT "A"

COMMON LOCATED AT TERMINALS 11 & 21 FOR DECKS 1 & 2 RESPECTIVELY (SWITCH SHOWN IN THE "OFF" POSITION)



DESCRIPTION
16A1-M-2
 REV. C



308 COMPONENTS DRIVE
 SMITHFIELD, NC 27577 USA