

SHALLCO SERIES 16 SWITCH

PART NO: 16A1-B-3

NO. OF SECTIONS: 3

INDEXING: 45°

CIRCUIT: A (SEE SCHEMATIC)

TYPE ACTION: NONSHORTING

DETENT: STANDARD

STOPS INSTALLED: NO

TERMINALS: SCREW TYPE, HARDWARE SUPPLIED

PHENOLIC POINTER KNOB: SUPPLIED

MOUNTING HARDWARE: SUPPLIED

ELECTRICAL RATINGS:

15 A @ 125 VAC

5 A @ 250 VAC

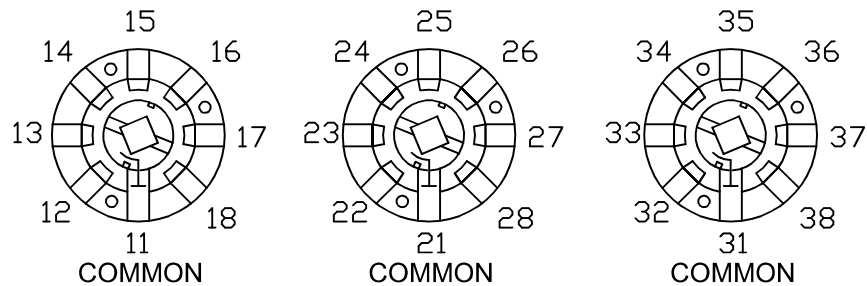
3 A @ 600 VAC

5 A @ 30 VDC

1 A @ 125 VDC



DIELECTRIC WITHSTANDING VOLTAGE: 1500 VRMS
 CONTACT RESISTANCE: 10 MILLIOHMS MAX. INITIAL
 INSULATION RESISTANCE: 1000 MEGHOHMS, INITIAL

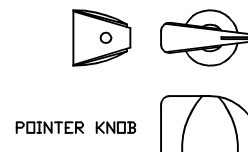
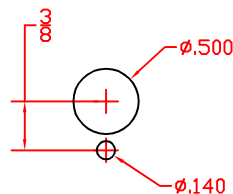


CIRCUIT "A"

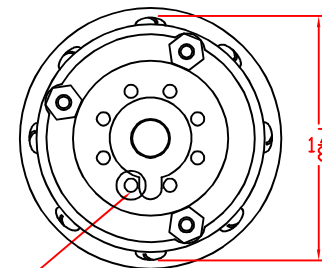
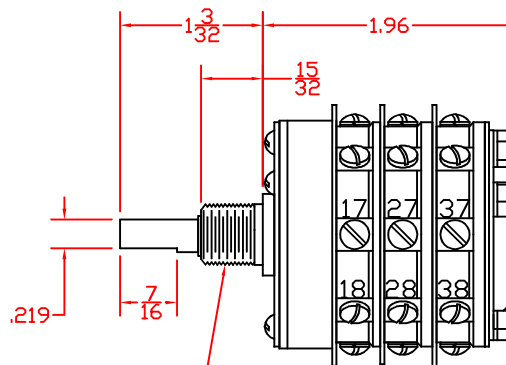
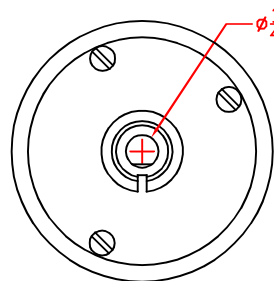
COMMONS LOCATED AT TERMINALS 11 & 21 & 31
 (SWITCH SHOWN IN THE "OFF" POSITION)

DECK	CONTACTS	POSITION																
		1	2	3	4	5	6	7	8									
1	11																	
	12			X														
	13				X													
	14					X												
	15						X											
	16							X										
	17								X									
2	21																	
	22			X														
	23				X													
	24					X												
	25						X											
	26							X										
	27								X									
3	31																	
	32			X														
	33				X													
	34					X												
	35						X											
	36							X										
	37								X									

MOUNTING DIMENSIONS



POINTER KNOB



STOP SCREW

DESCRIPTION	16A1-B-3	REV. A
-------------	----------	--------