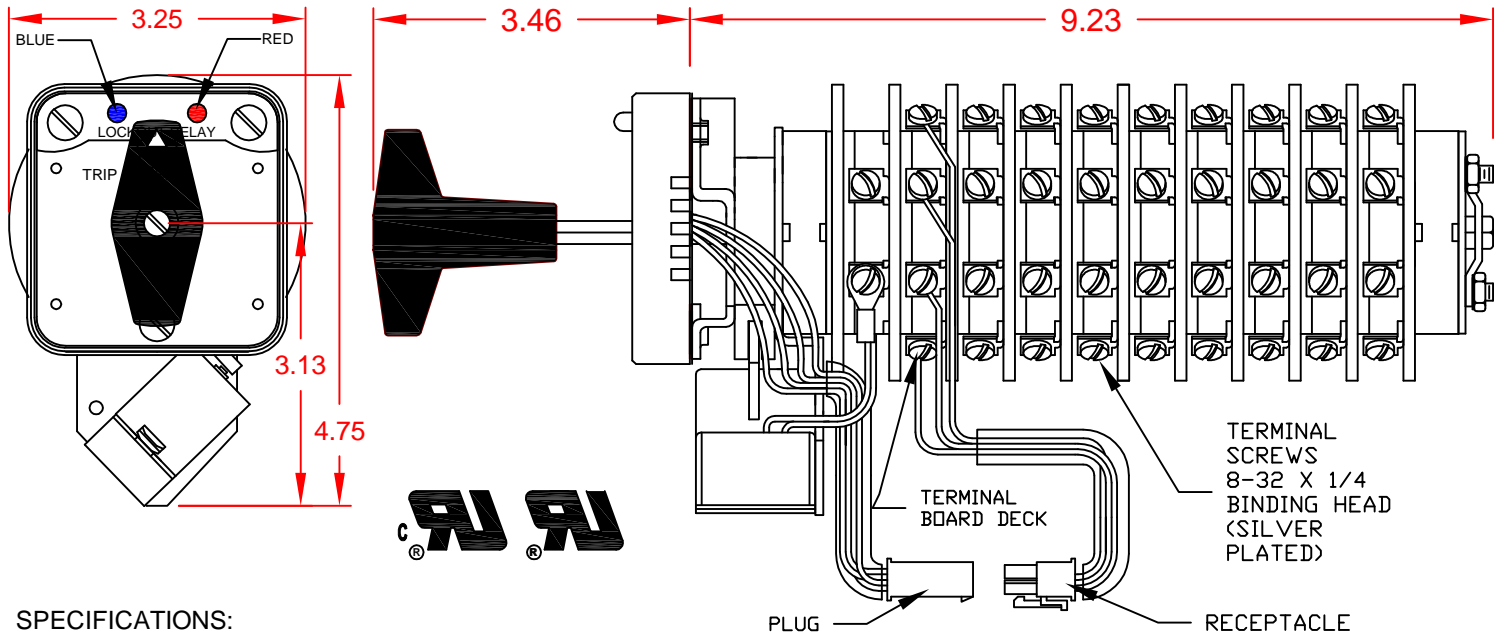


7608D 125VDCEXAWP



SPECIFICATIONS:

NO. OF POSITIONS: 2, TRIP AND RESET

NO. OF SECTIONS: 8

CONTACTS: 2 NORMALLY OPEN
2 NORMALLY CLOSED
PER DECK

ACTION: 45° POSITIVE TRIP DETENT

STATIONARY CONTACTS : SILVER OVER COPPER
NAMEPLATE: AS SHOWN

COIL SPECIFICATIONS:

OPERATING VOLTAGE: 125 VDC / 120 VAC

THRESHOLD VOLTAGE: 16 VDC / 20 VAC

OPERATING RANGE: 30 - 140 VDC / 30 - 140 VAC

CURRENT AT RATED VOLTAGE: 4.6 / 4.4 AMPS

ELECTRICAL RATINGS:

25 A/120 VAC 3 A/ 125 VDC

15 A/240 VAC 1 A/ 250 VDC

6 A/600 VAC

OVERLOAD CURRENT

(50 OPERATIONS):

95 A/120 VAC

65 A/240 VAC

35 A/600 VAC

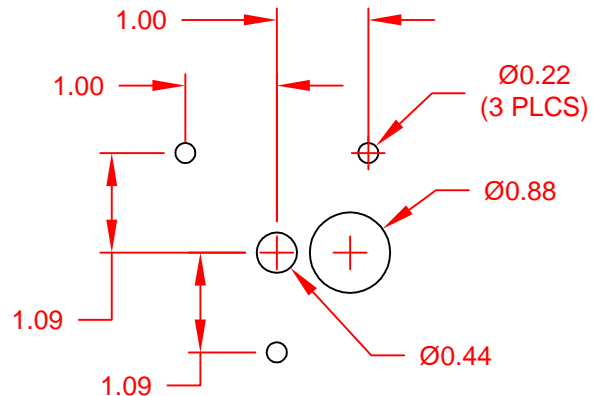
DIELECTRIC STRENGTH: 2200 VRMS

INSULATION RESISTANCE: 100 MEGOHMS INITIAL

CONTACT RESISTANCE: 10 MILLIOHMS MAX. INITIAL

DECK	CONTACTS	POSITION	
		TRIP	RESET
1	11 — — 13		
	12 — — 18	X	X
	15 — — 17		
	16 — — 14	X	X
2	21 — — 23		
	22 — — 28	X	X
	25 — — 27		
	26 — — 24	X	X
3	31 — — 33		
	32 — — 38	X	X
	35 — — 37		
	36 — — 34	X	X
4	41 — — 43		
	42 — — 48	X	X
	45 — — 47		
	46 — — 44	X	X

DECK	CONTACTS	POSITION	
		TRIP	RESET
5	51 — — 53		
	52 — — 58	X	X
	55 — — 57		
	56 — — 54	X	X
6	61 — — 63		
	62 — — 68	X	X
	65 — — 67		
	66 — — 64	X	X
7	71 — — 73		
	72 — — 78	X	X
	75 — — 77		
	76 — — 74	X	X
8	81 — — 83		
	82 — — 88	X	X
	85 — — 87		
	86 — — 84	X	X



PANEL DRILLING

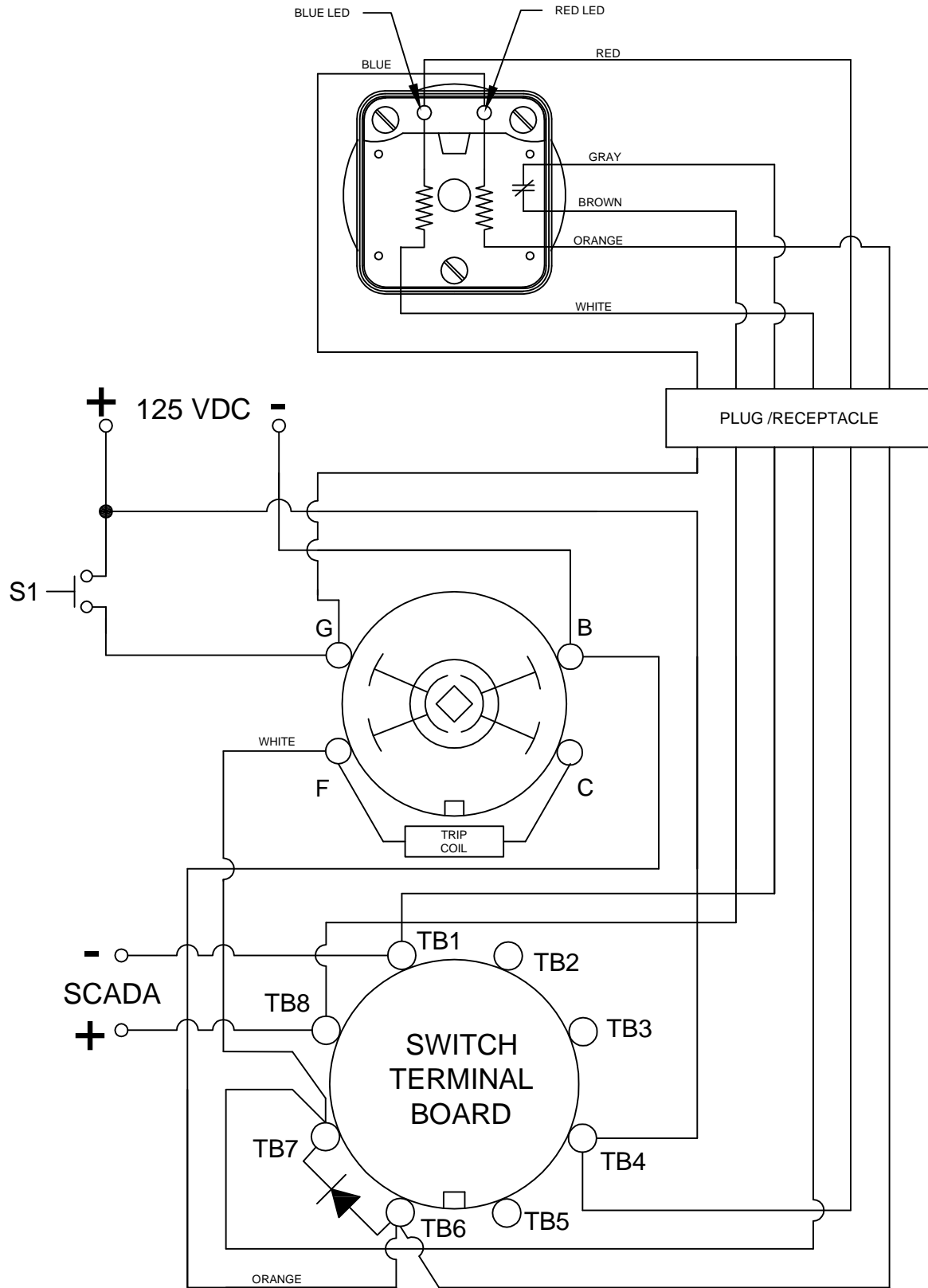
PART NUMBER

7608D125VDCEXAWP

REV A



308 COMPONENTS DRIVE
SMITHFIELD, NC 27577 USA



PART NUMBER

7608D125VDCEXAWP

REV A



308 COMPONENTS DRIVE
SMITHFIELD, NC 27577 USA

LOCK-OUT RELAYS (LOR)

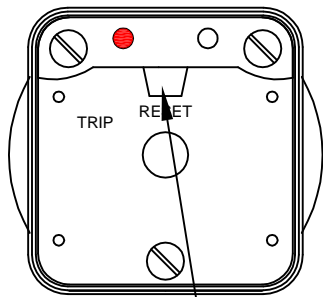
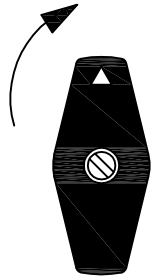
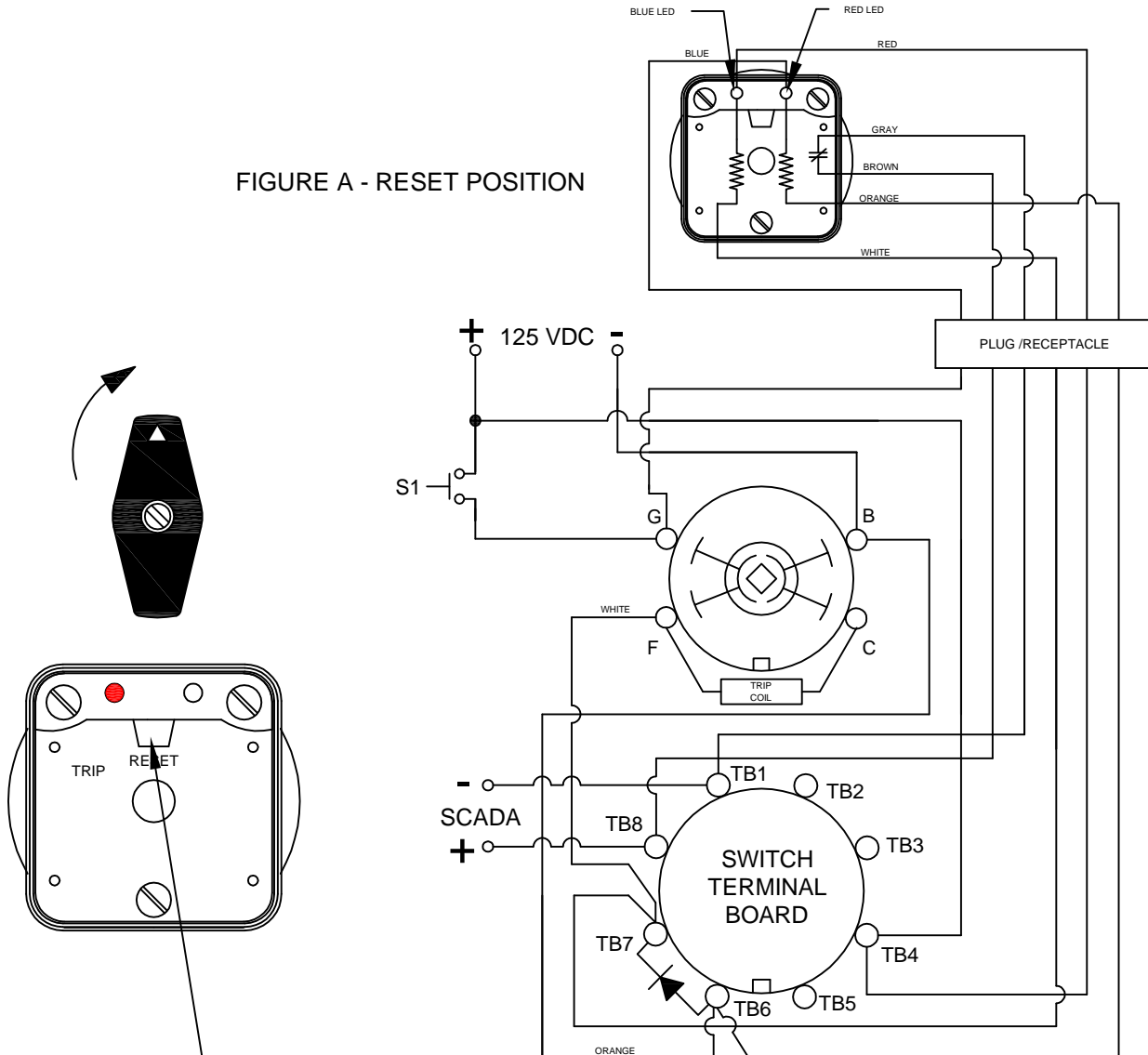
GENERAL OPERATION:

THE HANDLE OF THE LOR MUST BE MANUALLY ROTATED CLOCKWISE TO PLACE THE UNIT IN THE "RESET" POSITION (SEE FIGURE A)

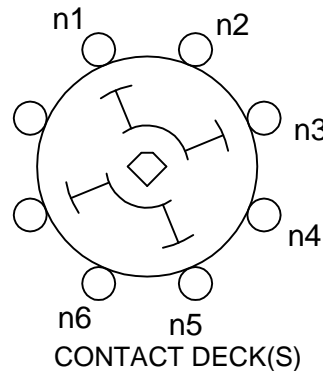
CONDITION #1	
ROTOR	RESET (AS SHOWN)
SWITCH 1 (S1)	OPEN

RESULT	
LEFT LED	ON
RIGHT LED	OFF
SCADA CIRCUIT TRIP COIL MONITOR)	OPEN

FIGURE A - RESET POSITION



NO FLAG INDICATION IN RESET POSTION



PART NUMBER

7608D125VDCEXAWP

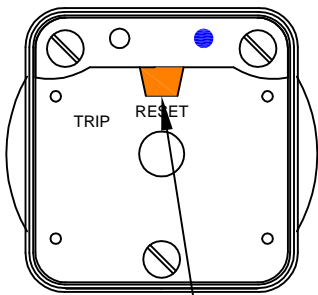
REV A

WHEN S1 CLOSSES, THE COIL CAUSES A MECHANICAL ROTATION OF THE RELAY RESULTING IN THE SWITCH ROTOR ADVANCE TO THE "TRIP" POSITION SHOWN

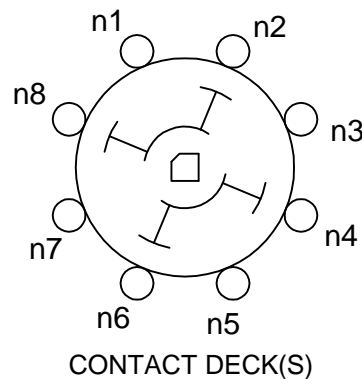
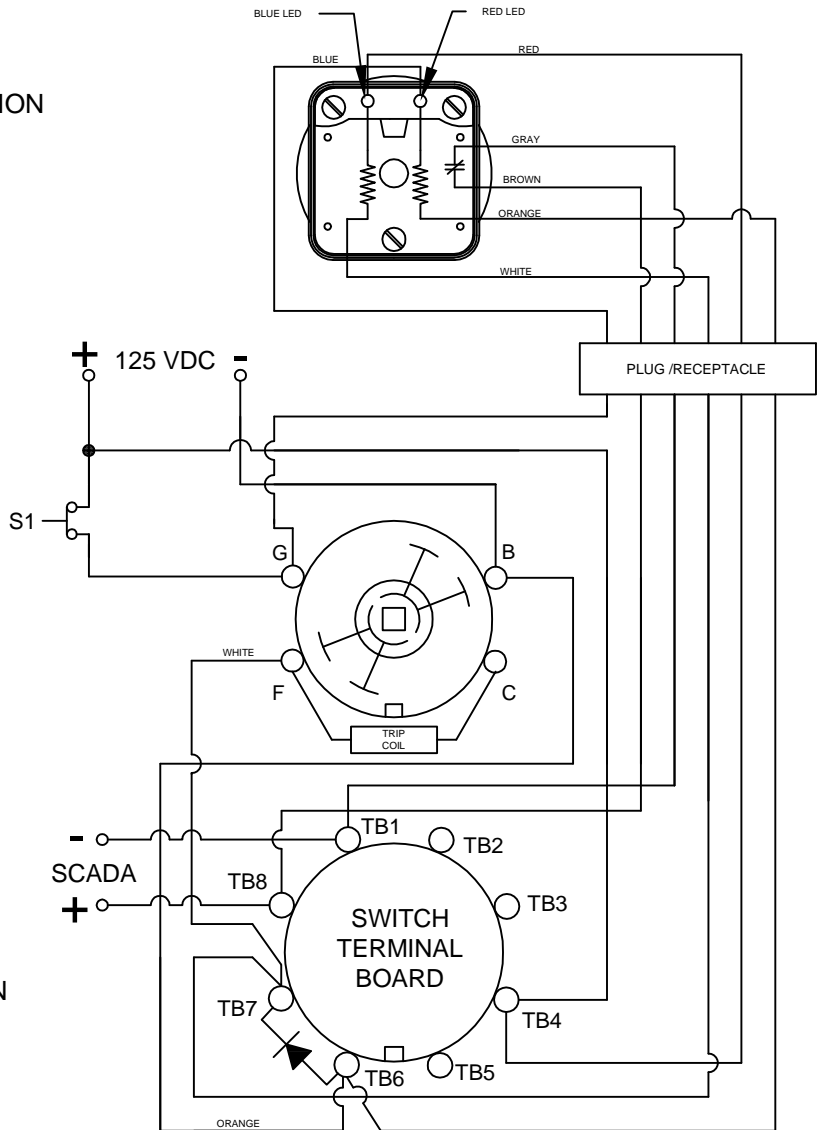
CONDITION #2	
ROTOR	TRIPPED (AS SHOWN)
SWITCH 1 (S1)	CLOSED

RESULT	
LEFT LED	OFF
RIGHT LED	ON
SCADA SWITCH	CLOSED

FIGURE B - TRIP POSITION



ORANGE FLAG INDICATION IN TRIP POSITION



PART NUMBER

7608D125VDCEXAWP

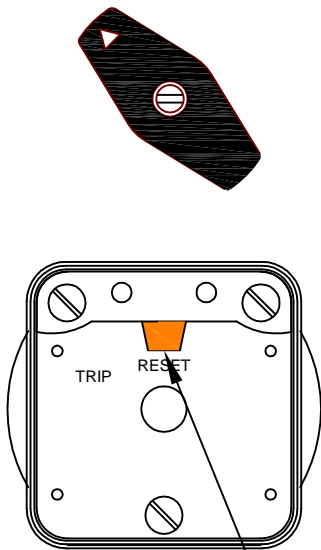
REV A

WHEN S1 OPENS BACK, THE SCADA CIRCUIT WILL REMAIN CLOSED UNTIL THE LOR IS ROTATED BACK INTO THE RESET POSITION.

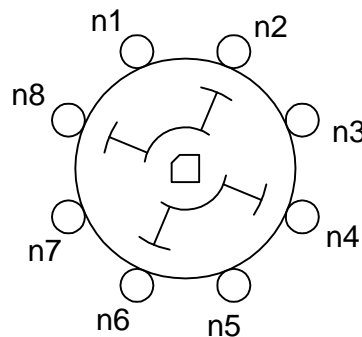
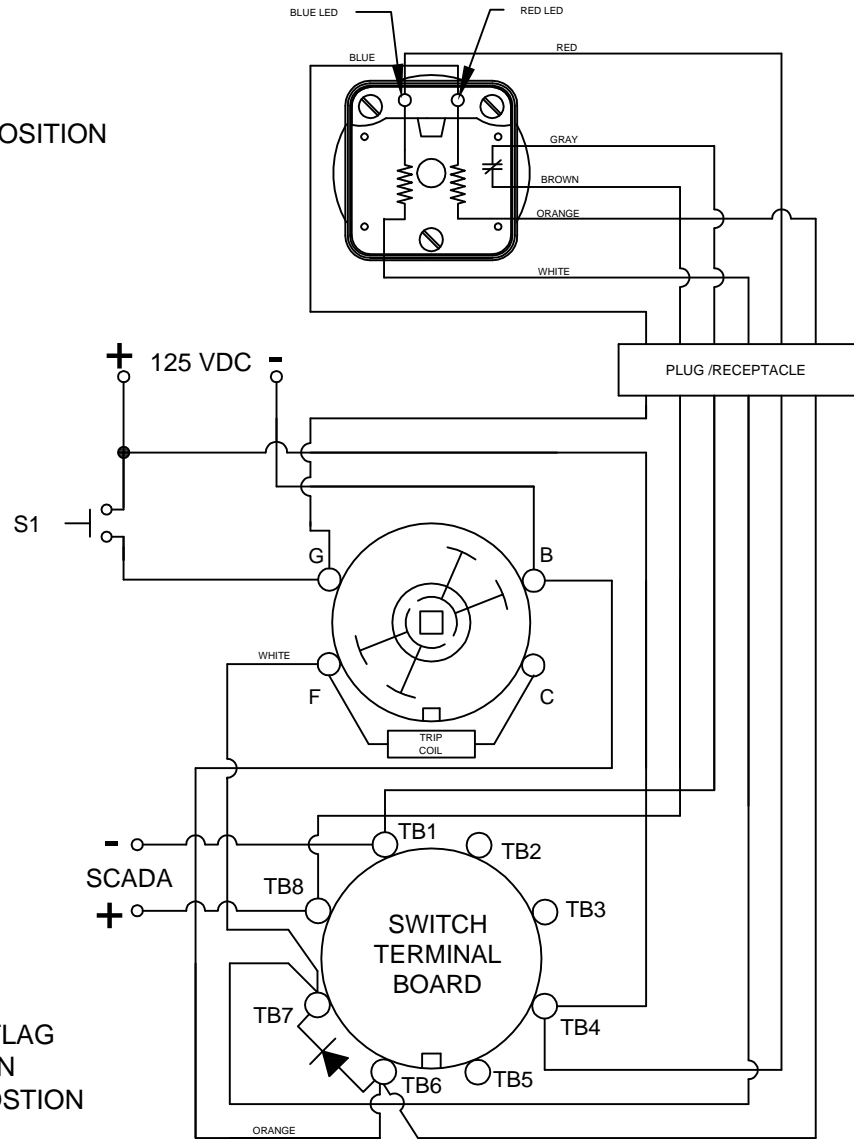
CONDITION #2	
ROTOR	RESET (AS SHOWN)
SWITCH 1 (S1)	OPEN

RESULT	
LEFT LED	OFF
RIGHT LED	OFF
SCADA SWITCH	CLOSED

FIGURE B - TRIP POSITION



ORANGE FLAG INDICATION IN TRIP POSITION



CONTACT DECK(S)

PART NUMBER

7608D125VDCEXAWP

REV A