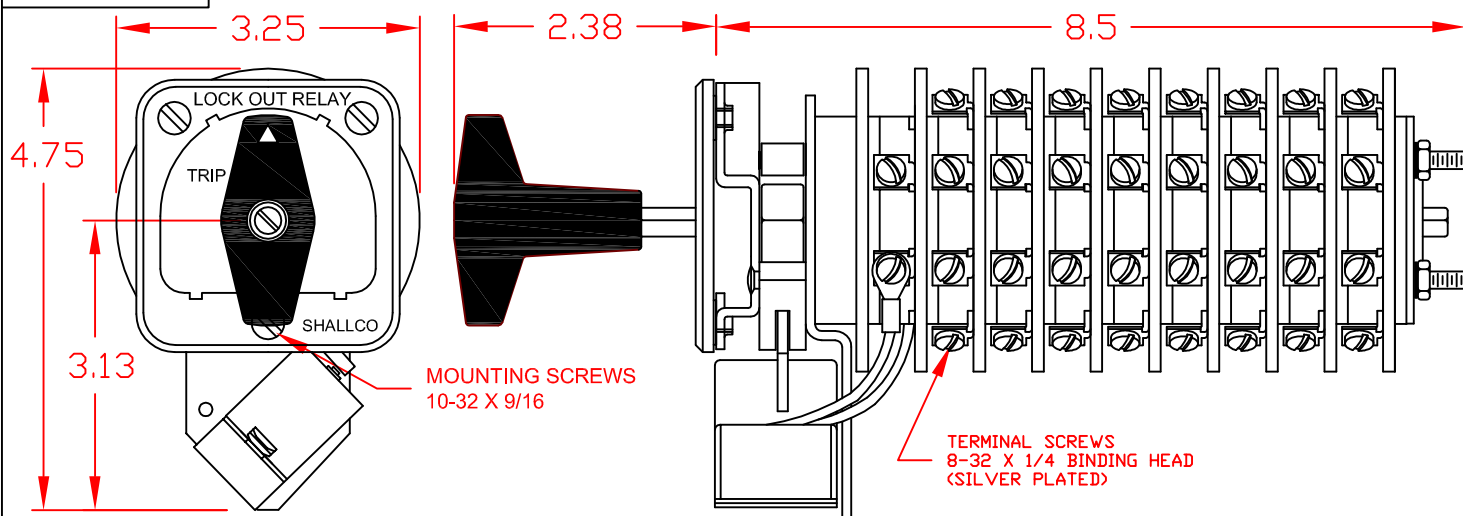


7608A



SPECIFICATIONS:

NO. OF POSITIONS: 2, TRIP AND RESET

NO. OF SECTIONS: 8

CONTACTS: 2 NORMALLY OPEN
2 NORMALLY CLOSED
PER DECK

ACTION: 45° POSITIVE TRIP DETENT

STATIONARY CONTACTS : SILVER OVER COPPER

NAMEPLATE: AS SHOWN

COIL SPECIFICATIONS:

OPERATING VOLTAGE: 24 VDC

THRESHOLD VOLTAGE: 6VDC

OPERATING RANGE: 10 - 40 DC

ELECTRICAL RATINGS:

25 A/120 VAC 3 A/ 125 VDC

15 A/600 VAC 1 A/ 250 VDC

20 A/600 VAC (RES)

OVERLOAD CURRENT (50 OPERATIONS):

95 A/120 VAC

65 A/240 VAC

35 A/600 VAC

DIELECTRIC STRENGTH: 2200 VRMS

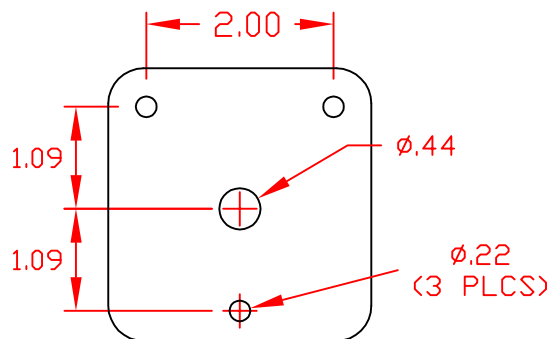
INSULATION RESISTANCE: 100 MEGOHMS INITIAL

CONTACT RESISTANCE: 10 MILLIOHMS MAX. INITIAL

DECK	CONTACTS	POSITION	
		TRIP	RESET
1	11 \circ — — \circ 13		
	12 \circ — — \circ 18		
	15 \circ — — \circ 17		
	16 \circ — — \circ 14		
2	21 \circ — — \circ 23		
	22 \circ — — \circ 28		
	25 \circ — — \circ 27		
	26 \circ — — \circ 24		
3	31 \circ — — \circ 33		
	32 \circ — — \circ 38		
	35 \circ — — \circ 37		
	36 \circ — — \circ 34		
4	41 \circ — — \circ 43		
	42 \circ — — \circ 48		
	45 \circ — — \circ 47		
	46 \circ — — \circ 44		

DECK	CONTACTS	POSITION	
		TRIP	RESET
5	51 \circ — — \circ 53		
	52 \circ — — \circ 58		
	55 \circ — — \circ 57		
	56 \circ — — \circ 54		
6	61 \circ — — \circ 63		
	62 \circ — — \circ 68		
	65 \circ — — \circ 67		
	66 \circ — — \circ 64		
7	71 \circ — — \circ 73		
	72 \circ — — \circ 78		
	75 \circ — — \circ 77		
	76 \circ — — \circ 74		
8	81 \circ — — \circ 83		
	82 \circ — — \circ 88		
	85 \circ — — \circ 87		
	86 \circ — — \circ 84		

NAMEPLATE AND PANEL DRILLING DIMENSIONS



DESCRIPTION

7608A



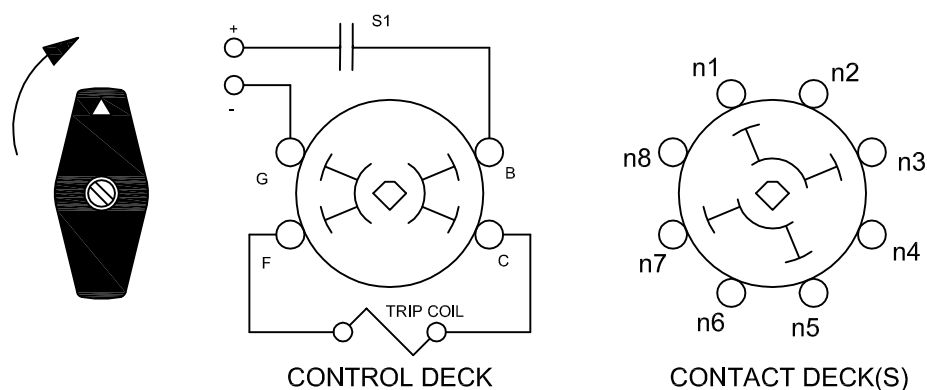
308 COMPONENTS DRIVE
SMITHFIELD, NC 27577 USA

LOCK-OUT RELAYS (LOR)

GENERAL OPERATION:

THE HANDLE OF THE LOR MUST BE MANUALLY ROTATED CLOCKWISE TO PLACE THE UNIT IN THE "RESET" POSITION (SEE FIGURE A)

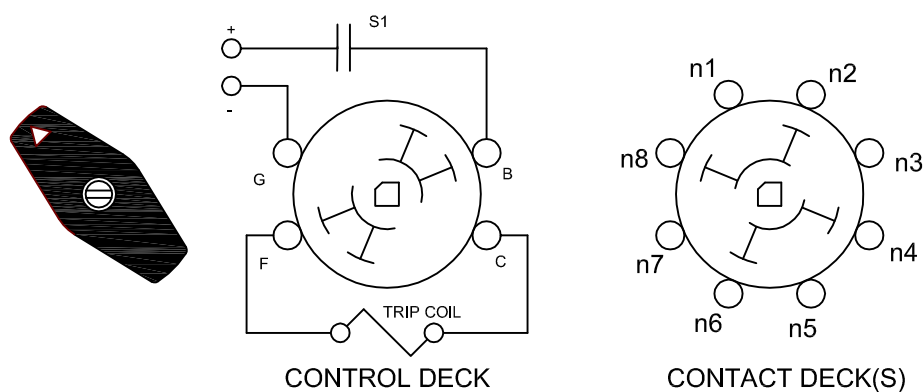
FIGURE A - RESET POSITION



WHEN A PREDETERMINED CONDITION EXISTS, A SIGNAL WILL BE SENT TO S1 WHICH WILL ACTIVATE THE COIL AND CAUSE THE LOR TO "TRIP". THE "B" AND "G" CONTACTS ON THE CONTROL DECK PROVIDE THE CONNECTION TO THE CONTROL CIRCUIT THROUGH S1 WHICH CAN BE A CONTACT OF ANY TYPE I.E. SWITCH, RELAY.... THE LOR CONTACTS IN FIGURE "B" ARE IN THE "TRIPPED" POSITION.

THE LOR WILL REMAIN IN THE "TRIPPED" POSITION UNTIL MANUALLY RESET.

FIGURE B - TRIP POSITION



DESCRIPTION

7608A