

SHALLCO SERIES 26
Part Number: 26202B-2



General:

Meets requirements for 1 - 25 ampere switching of resistive loads to .75 power factor at voltages to 600 VAC and 250 V DC resistive loads

Electrical Ratings: 25A/120 VAC
 15A/600 VAC
 20A/600 VAC (RES)
 3A/125 VDC
 1A/250 VDC



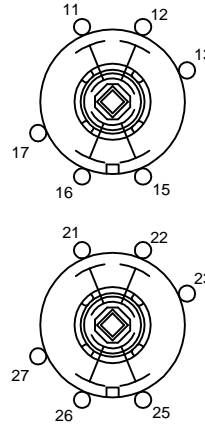
- * Current carrying capacity: 25 amperes
- * Dielectric Withstanding Voltage: 2200 Vrms
- * Contact Resistance: Initial, 10 milliohms max.
- * Insulation Resistance: 100 Megohms min., initial

Mechanical:

- * Sections: 2
- * Positions: 2
- * Indexing: 45° positive detent
- * Rotational Life: 65,000 operations

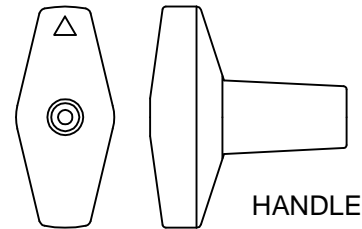
Materials and Finishes:

- * Rotors and Stators: Thermoset Plastic UL 94VO
- * Rotor contacts: Phosphor bronze
- * Stator contacts: Silver plated copper screw type
- * Terminal hardware: silver plated brass
- * Exterior Metal: Steel with zinc chromate finish

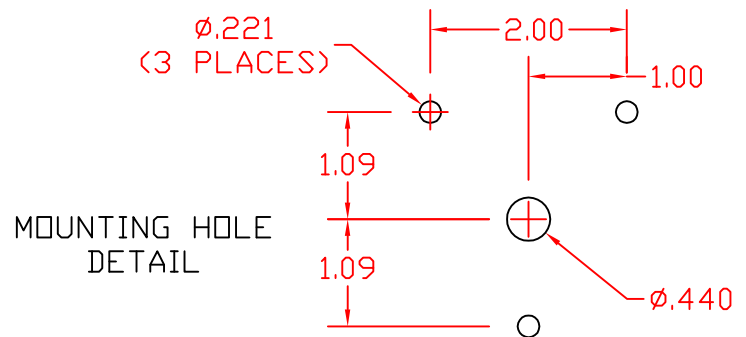


DECK	CONTACTS	POS	
		1	2
1	12	X	
	13		X
	16	X	
2	21	X	
	23		X
	26	X	

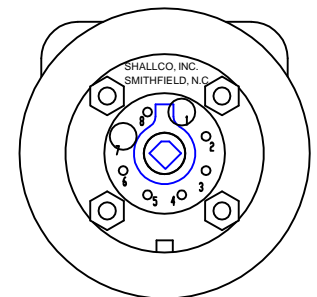
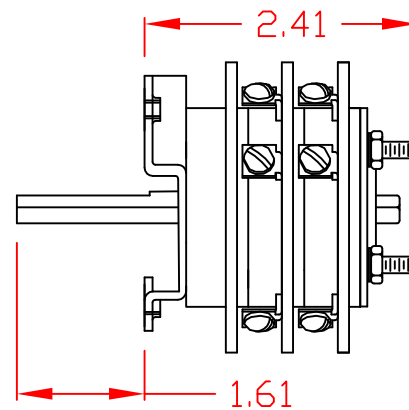
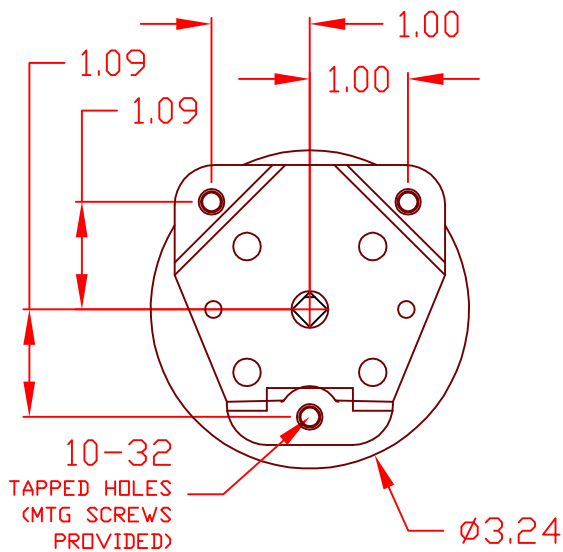
CONTACT TABLE



HANDLE



MOUNTING HOLE DETAIL



26202B-2

REV A



308 COMPONENTS DRIVE
 SMITHFIELD, NC 27577 USA